



BATTALION
SPECKLE PARK

Inaugural Sale

1PM - MONDAY 17TH APRIL 2023



THE 2023 BATTALION LIVESTOCK SPECKLE PARK SALE OFFERING:

18

Females

25

Bulls

32

Embryos

2

Semen lots



SALE LOCATION: GLEN INNES SHOWGROUND

Bourke Street & Hunter Street, Glen Innes NSW 2370

MAIN GATE via Torrington Street

AGENTS: COLIN SAY & CO PTY LTD



Colin Say & Co. Pty Ltd

rmanetwork Accredited Member

Nathan Purvis 0427 324 078 • Shad Bailey 0458 322 283

Craig Thomas 0428 669 500 • Steve Daley 0400 406 667

AUCTIONEER: PAUL DOOLEY PTY LTD



Paul Dooley 0458 662 646

VENDORS: BATTALION LIVESTOCK



Grant & Kylie Kneipp

"Wattle Dale" 1259 Nine Mile Road, DUNDEE NSW 2370

Grant: 0428 726 771 • Kylie: 0437 575 022

Email: grant@battalion.com.au

Website: www.battalion.com.au

HOW TO REGISTER with ELITE LIVESTOCK AUCTIONS



Simply go to www.elitelivestockauctions.com.au using your desktop, laptop, iPad, iPhone or android device.



Click on the **"Sign Up"** page / link



Create a bidding profile using the bidder registration page. *(You can either register as a livestock agent, company or private buyer)*



Agree to the Elite Livestock Auctions Terms & Conditions and the Selling Agents Sale Terms & Conditions as printed in the official Sale Catalogue



Click **"Register"**



You will then be notified by email that an account has been created.



Once an account has been created you are all **"Set to Bid"**



Each Auction can then be viewed by clicking **"Live Auction"** logo on the Elite Livestock Auctions website.



Once you receive email notification that your account has been created please go to the sale you wish to bid at and click **"Request to Bid"**



The sale will then approve your application to bid and on the sale catalogue you will see **"✓ Bid Request Approved"**



On Sale day simply login, click **"Enter Auction"** on the catalogue page and you can start bidding. *(There is no need for software download)*



At the completion of the auction, invoicing will be carried out as per your registration details by the Selling Agents.

Having trouble registering and logging in?

1300 259 742



Elite Livestock Auctions ABN 19604 627 607
Level 19, 123 Eagle Street, Brisbane, QLD 4000

P : 1300 259 742 F : 07 3041 5053
www.elitelivestockauctions.com.au

regional & agribusiness

more than money



Proud to support THE BEEF INDUSTRY IN THE NEW ENGLAND

Our commitment to The New England extends well beyond banking. That's why we're proud to support Battalion Livestock Speckle Park Sale.

To find out more about how NAB is supporting your community contact:

Daren Wilkinson
Managing Partner
0436910867

Kate Black
Regional & Agri Manager
0407254449

©2021 National Australia Bank Limited ABN 12 004 044 937 AFSL and Australian Credit Licence 230686 A160482-0121



32-42 IVY STREET,
KILLARNEY
07 4664 1188

FOR ALL YOUR STOCKFEED REQUIREMENTS

SALE INFORMATION.

SALE DAY

Monday 17th April 2023

LOCATION

Glen Innes Showground

Torrington St, Glen Innes NSW 2370

Entry to the showground is via Torrington Street main gate

Truck entry via Hunter Street

INSPECTION OF SALE ANIMALS

Monday 17th April 2023

From 10:00 am

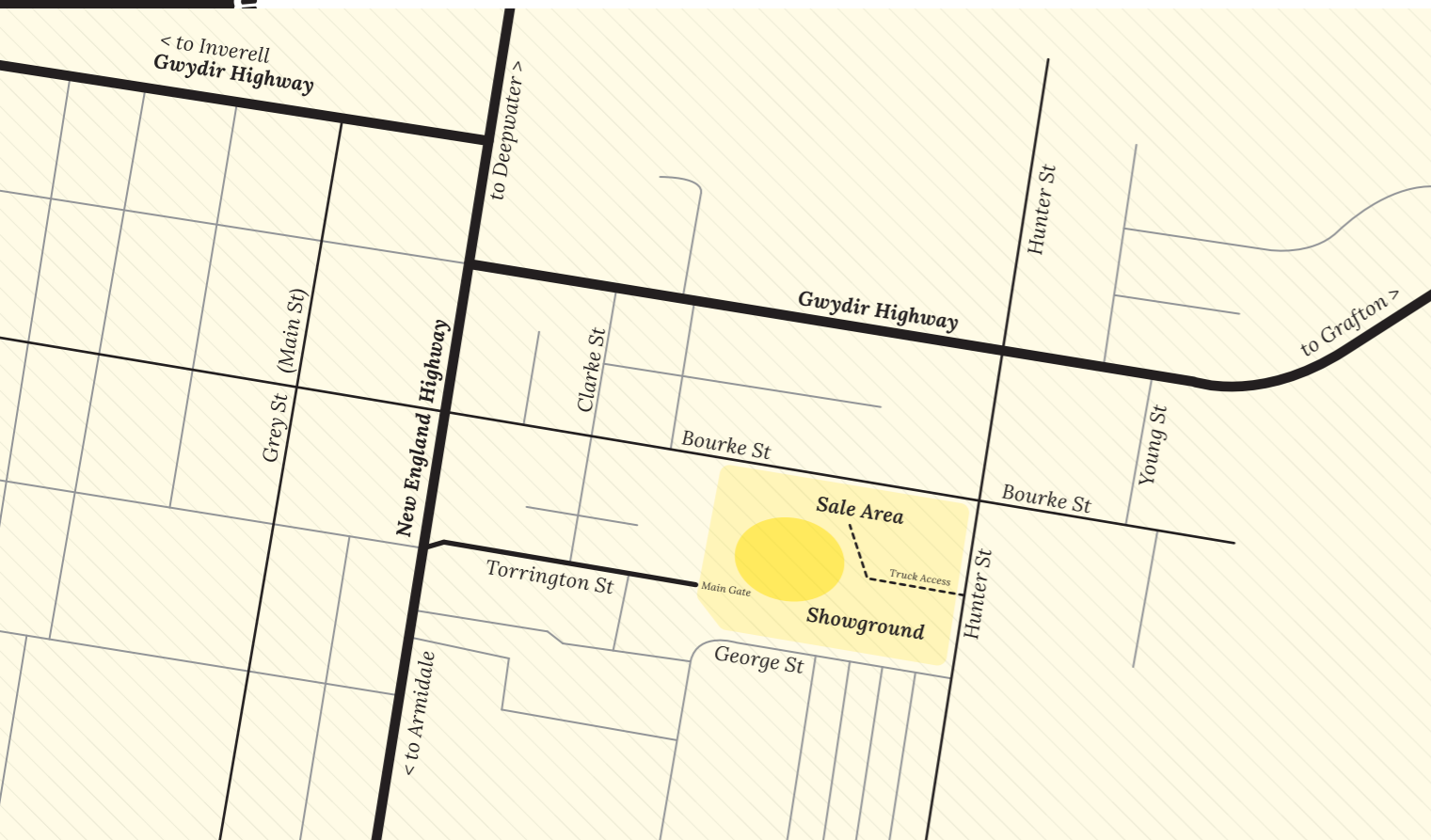
AUCTION

Monday 17th April 2023

Starting at 1:00 pm

FOOD & DRINKS

Lunch and refreshments will be available on the day



INSPECTION

The animals are available for inspection from 10am on sale day. We encourage inspection of Battalion Livestock on property prior to sale day by appointment. This gives you the opportunity to view the animals in their natural environment and possibly inspect other animals in the pedigree to assist you in making your decision.

BUYERS REGISTRATION

The Buyers number system will be in operation. All prospective purchasers are asked to register prior to the sale.

ONLINE & PHONE BIDDING

If you are unable to attend on the day, the sale will be conducted in conjunction with Elite Livestock Auctions. Please refer to page 4 for further information. Phone bidding can be arranged through Colin Say & Co or your preferred agent. There is good Mobile Coverage in Glen Innes.

VISITOR SAFETY

All of the sale cattle have been screened for temperament and are quiet under normal circumstances, **however visitors enter the cattle pens at their own risk. Children/Prams must not enter the sale pens.**

DISABLED ACCESS

Disabled access is available at the showground and into the stands at the sale yards.

OUTSIDE AGENT REBATE

A rebate of 2% is offered to outside agents who introduce buyers to the selling agent in writing at least 24hrs prior to the sale and settle accounts on the purchaser's behalf within 7 days of the sale.

GST

All animals are sold exclusive of GST. GST is added to your invoice.

TRANSPORT

Carriers will be available on sale day. If you wish to bring your own truck, we will accommodate the release of your animal at the completion of the auction. All animals need to be transported from the sale venue by 5pm Tuesday the 18th of April 2023 unless prior arrangements have been made with the vendors. Formal possession, risk and expenses pass to the buyer at the fall of the hammer.

We recommend having a quiet animal (e.g. cow, steer etc.) yarded and ready to greet your bull/female when they arrive home to minimise stress on the animal and help it adjust to its new environment.

INSURANCE

Your animals are a valuable and vulnerable asset to your business. We highly recommend insuring your new purchase at the completion of the sale.

Insurance will be available on site.

All lots will be sold under the Australian Livestock & Property Agents Association Ltd Standard Stud Stock Auction Terms and Conditions of Sale. If unfamiliar with these terms, please contact Colin Say & Co.

DISCLAIMER

All reasonable care has been taken to ensure that the information provided in this catalogue is correct at the time of publication. However, the vendor and the selling agents do not assume any responsibility for the correctness or accuracy of the information provided. It is advised to seek independent verification of any information contained in this catalogue before relying on such information.

The vendors and agents are willing to provide assistance for those seeking guidance on the sale animals. However, the final decision is that of the purchaser and it is recommended that the purchaser either inspect the cattle thoroughly on sale day or at private inspection before the sale.



QR CODES.

Wherever you see a QR Code, scan it with your smart phone to be taken to the extra content.

Please bring your catalogue to the sale.

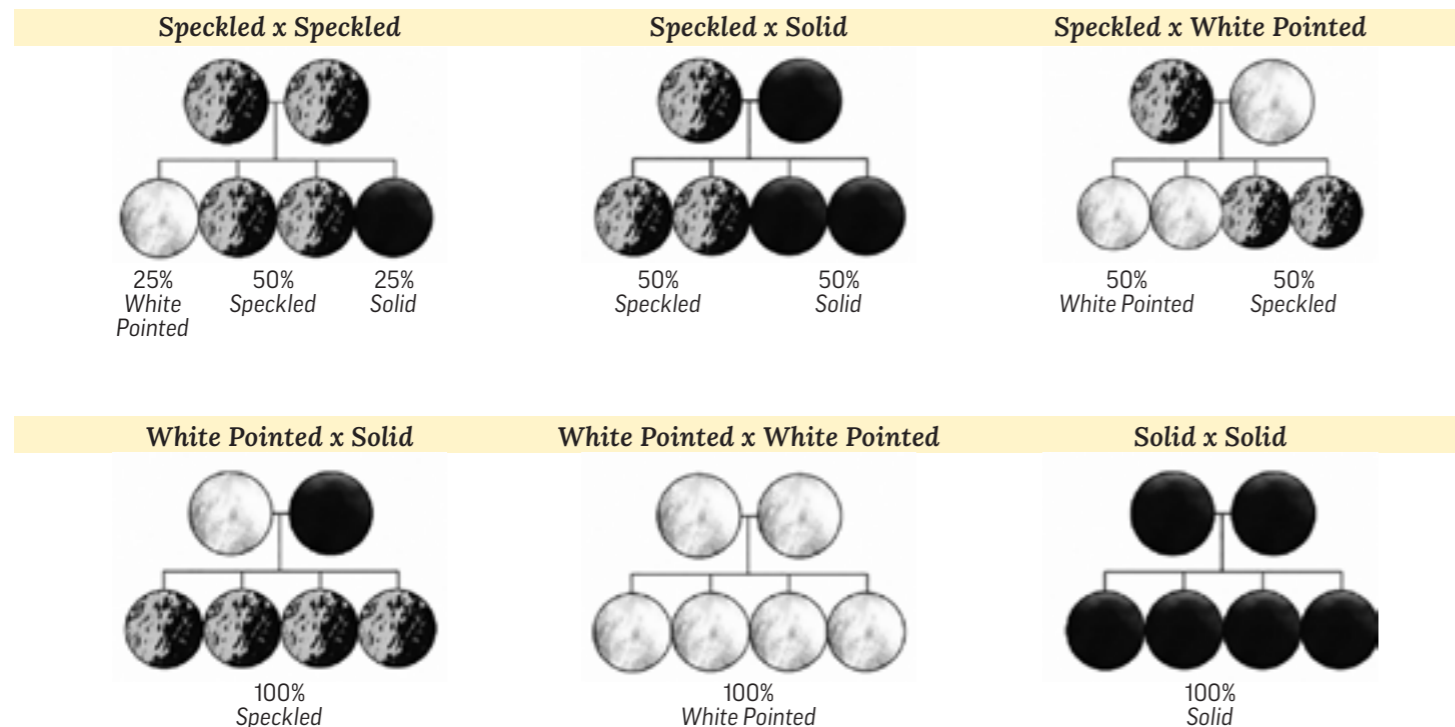
DNA GENETIC TESTING KEY.

Myostatin	F	Myostatin Gene FREE (NT821F)
	C	Mysostatin Gene CARRIER (NT821C)
Coat	RGF	Red Gene Free
	RGC	Red Gene Carrier
	RGA	Red Gene Affected
Poll Status	PCPC	Homozygus Polled
	HPC	Heterozygous Polled (could be scurred)
	HH	Homozygous Horns
Leptin	CC	Normal marbling & fat accumulation tendencies
	TT	Increased marbling & fat accumulation tendencies
	CT	Marbling and fat accumulation tendencies between that of CC & TT

COLOUR PATTERN GUIDE

Speckle Park Cattle have 4 distinctive Colour Patterns; Speckled, Leopard, White & Black.

The speckle and leopard colour patterns are genetically the same except for varying degrees of spot and pattern. Some Speckle Park cattle can produce red colour patterns if both parents carry the recessive red gene. It is important to understand how the colour patterns are inherited in order to achieve your breeding goals. Please remember that this is a guide only and individual results may vary.



RECOMMENDED ACCOMMODATION

Book direct and mention our sale for best rates



Rest Point Motor Inn
72 New England Hwy, Glen Innes NSW 2370
Ph: (02) 6732 2255
www.restpointmotel.com.au



New England Motor Lodge
160 Church St, Glen Innes NSW 2370
Ph: (02) 6732 2922
www.neml.com.au

CAMP AT THE GLEN INNES SHOWGROUND



Campers with pets, or travelling with horses are always welcome. Reasonable overnight rates and available for large groups. The Showground is close to all Glen Innes town facilities, in a quiet off-highway location. It is easy to access with large vehicles and caravans.
www.gleninnesshowground.com

ACCOMMODATION.

Rest Point Motor Inn

Hereford Steakhouse

Char Grill

The only choice in Glen Innes...

A place to sleep ~ A place to eat ~ A place to meet ~ A place to celebrate

PH: 02 6732 2255

72 New England Hwy

Glen Innes NSW 2370

www.restpointmotel.com.au

info@restpointmotel.com.au

The sale animals have been treated with the following and we strongly recommend annual boosters to ensure their health is maintained:

FEMALES

- Vaccinated with Pestigard
- Vaccinated with 7-in-1
- Vaccinated against Tick Fever
- Vaccinated against BEF (Bovine Ephemeral Fever)
- Virbamec LV Pour On
- Fasinex Oral
- Multimin
- Vitamin B12
- Selovin
- ADE
- DNA Tested negative to being persistently infected of Pesti Virus (Bovine Viral Diarrhoea Virus)

BULLS

- Vaccinated with 7-in-1
- Vaccinated against Tick Fever
- Vaccinated against BEF (Bovine Ephemeral Fever)
- Virbamec LV Pour On
- Fasinex Oral
- Multimin
- Vitamin B12
- Selovin
- ADE
- DNA Tested negative to being persistently infected of Pesti Virus (Bovine Viral Diarrhoea Virus)

EBV's

Percentile Bands for Breedplan - Calves born in 2020

BAND	Gestation Length (days)	Birth Wt (kg)	200 Day Wt (kg)	400 Day Wt (kg)	600 Day Wt (kg)	Mat Cow Wt (kg)	Milk (kg)	Scrotal Size (cm)	Carcase Wt (kg)	Eye Muscle Area (sq cm)	Rib Fat (mm)	Rump Fat (mm)	Retail Beef Yield (%)	IMF (%)
BREED AVERAGE	+0.1	+1.7	+15	+24	+32	+32	+4	+0.3	+19	+0.6	+0.1	+0.1	0	+0.1
Top Value	-3.5	-3.4	41	57	73	81	11	2.2	44	2.8	4.3	5.9	2.9	1.7
Top 1%	-2.4	-1.3	31	46	59	65	9	1.5	36	2.1	2.2	3.1	1.4	1.3
Top 5%	-1.4	-0.3	26	39	52	56	7	1	32	1.6	1.3	1.8	1	0.7
Top 10%	-1	0.2	23	36	48	51	6	0.8	29	1.4	1	1.3	0.8	0.5
Top 15%	-0.8	0.5	21	33	44	47	6	0.7	27	1.2	0.7	1	0.7	0.4
Top 20%	-0.6	0.8	20	31	41	44	6	0.6	25	1.1	0.6	0.8	0.6	0.4
Top 25%	-0.4	0.9	19	30	39	41	5	0.5	24	1	0.5	0.6	0.5	0.3
Top 30%	-0.3	1.1	18	28	37	39	5	0.5	23	0.9	0.4	0.5	0.4	0.2
Top 35%	-0.2	1.2	17	27	36	37	5	0.4	22	0.8	0.3	0.4	0.3	0.2
Top 40%	-0.1	1.4	16	26	34	35	4	0.4	21	0.8	0.2	0.2	0.2	0.1
Top 45%	0.1	1.5	15	25	33	33	4	0.3	20	0.7	0.1	0.1	0.1	0.1
Top 50%	0.1	1.6	15	24	31	31	4	0.3	19	0.6	0	0	0	0.1
Top 55%	0.3	1.8	14	23	30	30	4	0.2	18	0.6	0	-0.1	0	0
Top 60%	0.4	2	13	21	29	28	4	0.2	17	0.5	-0.1	-0.2	-0.1	0
Top 65%	0.5	2.1	12	20	27	27	3	0.1	16	0.4	-0.2	-0.3	-0.2	-0.1
Top 70%	0.6	2.3	12	19	26	25	3	0.1	15	0.4	-0.3	-0.5	-0.3	-0.1
Top 75%	0.7	2.4	11	18	24	23	3	0	14	0.3	-0.4	-0.6	-0.4	-0.1
Top 80%	0.8	2.7	10	17	22	21	2	-0.1	13	0.1	-0.5	-0.8	-0.5	-0.2
Top 85%	1	2.9	9	15	20	18	2	-0.2	12	0	-0.6	-0.9	-0.7	-0.3
Top 90%	1.1	3.3	8	13	17	15	1	-0.3	10	-0.1	-0.8	-1.1	-0.9	-0.4
Top 95%	1.4	3.8	6	10	13	9	1	-0.5	8	-0.4	-1.1	-1.5	-1.2	-0.5
Top 99%	2	4.7	1	2	2	-6	0	-1	2	-0.8	-1.4	-2	-1.9	-0.8
Low Value	3.4	6.9	-16	-10	-21	-33	-3	-3.1	-7	-1.4	-2.4	-3.3	-3.3	-1.4

BULLS

All bulls come with a 6 month fertility guarantee. In the case that a bull is found to be incapable of natural service or infertile within 6 months from the date of sale, excluding sickness or injury, the vendor will replace the bull with another of comparable value, or provide a credit of the purchase price excluding interest, costs & damages, less disposal proceeds to the buyer, to be used within 12 months. In the case of a fertility claim the purchaser will need to provide a veterinary certificate stating the nature of the problem and that it was not a result of illness or injury. All bulls have fertility tested and passed a crush side veterinary examination.

FEMALES

All females are sold as guaranteed breeders. In the unlikely event that a female cannot be bred after being serviced by a fertile bull in the 6 months from the date of the sale or by the time the female reaches 22 months of age, the vendor will replace the female with another of comparable value or provide a credit of the purchase price excluding interest, costs & damages, less disposal proceeds to the buyer, to be used within 12 months. In the case of a fertility claim the purchaser will need to provide a veterinary certificate stating the nature of the problem and that it was not a result of illness or injury. All females have been palpitated to ensure the soundness of their reproductive tract. PTIC females have been confirmed pregnant by a qualified Veterinarian at the time of sale, post sale abortions will not be covered by the vendor nor shall there be a guaranteed live calf. Females are guaranteed to be fertile breeders for natural service, no females are guaranteed to flush successfully.



NEW ENGLAND MOTOR LODGE

Stay and dine at Glen Innes' only 4-star property in our newly renovated rooms





Book Direct - Mention Sale for our Special Offer

THE HIGHLANDS RESTAURANT

A must do dining experience! Conveniently located on site
Open daily for breakfast & dinner

160 Church St, Glen Innes, NSW | Call (02) 6732 2922 | www.neml.com.au

GUARANTEE CONT.

SEMEN/EMBRYOS

- All lots are offered for domestic use only, they are not eligible for export.
- All embryos sold are Grade 1
- The purchaser is responsible for all insurance, shipping and handling.

Genetic lots will only be released after payment of the invoice has been made. At the fall of the hammer all storage fees of the genetic lots is the responsibility of the purchaser.

All genetic lots are stored at Castlereagh Artificial Breeders Bendemeer.
Contact: Margaret Sheddan 0408 498 922 or info@castlereaghab.com.au

To obtain a conception rate guarantee on embryo packages the purchaser will be required to:

- Use suitable recipients (as determined by Battalion Livestock)
- Implants take place within 1 year of the sale by a licensed embryo technician (recommended or approved by Battalion Livestock)
- Pregnancy tests are performed by a qualified technician between 45-60 days after the implant date.

THESE CONDITIONS OF ELIGIBILITY ARE BEST DISCUSSED WITH BATTALION LIVESTOCK PRIOR TO ANY EMBRYOS BEING TRANSFERRED

Conception Rate Guarantee:

2 Embryos = 1 Pregnancy

3 Embryos = 1 Pregnancy

4 Embryos = 2 Pregnancies

If the Agreed Success Rate has not been achieved, the purchaser may claim on the guarantee by supplying to Battalion Livestock their licensed technicians transfer sheets and pregnancy results together with evidence that all relevant conditions have been satisfied by no later than 90 days after the implant date. Battalion Livestock will provide one replacement embryo per non pregnancy below the Agreed Success Rate of the same genetic combination or an agreed comparable genetic combination subject to availability. Or provide a credit to the value of purchase price less the confirmed pregnancies excluding interest, costs and damages, to be used within 12 months. The purchaser will have no further claim against Battalion Livestock.

It is the buyers responsibility to promptly insure their purchases according to their needs.



INSIGNIA Company

Insignia Co. provides customised marketing merchandise specialising in trucker hats!



As cattle breeders ourselves we understand your industry



WWW.INSIGNIACO.COM.AU

 @insigniacompany  @insigniacustomcompany

 admin@insigniaco.com.au  02 6734 4134



WELCOME TO OUR INAUGURAL SPECKLE PARK SALE.

The 17th of April 2023 marks a major milestone for our beef breeding operations, having been intensely focused on building foundations to make this sale possible since registering our stud in 2016.

The beef industry has seen a massive resurgence in recent years with the favourable seasons being the biggest contributing factor. As the supply now starts to meet the demand it's the producers with unwavering focus on delivering a top end product that will continue to realise the excellent prices being paid in both the stud and commercial market.

At Battalion Livestock we have a strong focus on breeding industry relevant animals that have the ability to develop above average Eye Muscle Areas (the top dollar cuts) whilst constantly working on improving Intramuscular Fats to ensure our genetics can meet the top specs required to achieve premiums plus also have the capacity to carry as many kilograms of high-grade beef as possible.

Although our history so far has predominantly highlighted our top price stud sales, we transition into our own sale with a strong emphasis on displaying our passion for breeding and supplying industry relevant bulls for the commercial market. The bulls offered at our inaugural sale have been bred to add power, performance and profitability whilst maintaining strong maternal traits to insure we are supplying high end self-replacing seedstock.

We hope that you will notice the style of Speckle Park cattle we are producing consistently have extra shape and volume and have the consistency in their pedigrees to go on and bred true to type. As seedstock producers our success is measured by our clients' results, we sincerely encourage any of our clients or prospective buyers to stay in touch with us and come and spend some time with us in the paddock discussing the animals and genetics. We can all learn from each other and having a friendly open dialogue with each other is something we place the upmost importance on.

Breeding cattle for showing purposes is not our focus, we are purely commercially driven with our breeding objectives and many of our best decisions have germinated whilst standing in the paddock strategically analysing cattle and calculating the pros and cons of every genetic breeding decision.

We would like to thank everyone who has assisted us along this journey. We hope you can join us on this special occasion and many more to come and wish you the best in your breeding endeavours.

Grant, Kylie, Travis, Grace & Hailey



OUR HISTORY.

I'm a 4th generation cattle producer and it may be said I was born with a love of cattle in my veins. Some of my fondest memories as a child revolve around cattle, from having purchased my first stud cow (Hereford) at the age of 14 to registering my own stud back in 2006 and now conducting a yearly Hereford Bull Sale. Whilst I have always loved Herefords and always will, I carefully studied the Speckle Park breed since its introduction into Australia with great interest.

After a lot of research the Battalion Speckle Park stud was registered in 2016 after the purchase of 8 frozen embryos from Six Star Speckle Park resulting in two bulls and two heifers. The two bulls went on to sell at the Scone multi-vendor sale for the top vendor average of \$22,000 and setting the sale record for a bull that still stands today at \$26,000. The two females were retained as foundation donors with one of them, Heartbreaker M1 now being regarded as one of the breeds top producers in the world, with progeny sales currently grossing over half a million dollars and still increasing.

Our great matriarch has given us many highlights and several Australian and World Records. She has produced the current world record priced female for \$100,000 (to Ivery Downs Speckle Park), A son that held the Australian record at \$45,000 (to Celamba Speckle Park), a world record for Embryos at \$5050 each (to Toebelle Speckle Park) and another of her sons has the Australian record semen price at \$860 per straw (sold by Ivery Downs Speckle Park).

We started breeding Speckle Park cattle to diversify our breeding program and run a second breed side by side with our Hereford stud. The natural thickness and carcass merit drew us to the breed. We've always had a strong focus on breeding cattle with extra thickness and structural correctness whilst maintaining a strong emphasis on constitution and temperament. We have found our Speckle Park cattle tick those boxes and allow us to breed industry relevant animals that can perform and match up competitively in the current market.

For the past 5 years we have been improving our genetic base and marketing our stud bulls and females at the Scone multi-vendor sale with great success. Now the time has come where we have the confidence that our cattle competitively match up with the top end of the breed and our breeding program has the consistency and stability to conduct our own sale on a yearly basis.

We run a small intensive Speckle herd of females with the ability to breed top quality calves. Through the use of embryo transfer we are able to continually match our top females to the best bulls in the world and consistently breed calves that meet our breeding objectives.

My wife Kylie and I make a good team, her background in Veterinary Nursing and Graphic Design compliment well on both the cattle and marketing sides of the business. We now have a full house of cattle enthusiasts. Travis, Grace and Hailey all love cattle as much as we do and there are many debates on which cow is better. We are passionate about producing seedstock and pride ourselves on our customer service.

Grant



BAT M1

Heartbreaker

**ARGUABLY THE MOST ILLUSTRIOUS COW IN THE BREED;
THE PROOFS IN THE PROGENY**

PROGENY RESULTS:

- Top Daughter sold to \$100,000 ~ CURRENT WORLD RECORD
- Top Bull sold to \$45,000 ~ Australian RECORD 2020
- 7 daughters sold for an average of \$46,714
- 7 sons sold for an average of \$17,214
- Top Embryo's to \$5050 ~ WORLD RECORD 2020
- 20 x Embryo's Average \$2790
- Her son holds the Australian semen record price \$860per straw 2022

SALES SUMMARY:

- Total Heifers \$327,000 with a \$46,714 Av
- Total Bulls \$120,500 with a \$17,214 Av
- Combined Total Live Animals \$447,500 with a \$31,964 Av
- Heartbreaker M1 gross sales to date \$503,300 before 6 years of age



BAT R16: WORLD RECORD \$100,000



BAT R53 \$14,000



BAT Q43 \$20,000



BAT Q44: TOP PRICE 2022 - \$45,000



BAT R12 - RETAINED



BAT R20 - RETAINED



BAT R15 \$28,000



BAT P6 \$30,000



BAT S24 \$28,000



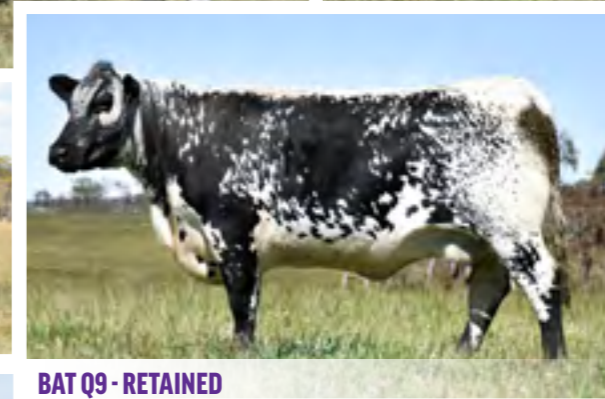
BAT S21 \$46,000



BAT S22 \$40,000



BAT S45 - RETAINED



BAT Q9 - RETAINED



BAT R14 - RETAINED



BAT S25 - RETAINED



BAT R13 \$55,000

*Her progeny will be her legacy...
they will speak for her long after she is gone.*



BAT M3

STYALS LIGHTNING LADD 14P (P) (Speckled)
Sire: SPOTS 'N SPROUTS STANDS ALONE (P) (White)
 SPOTS 'N SPROUTS 2R (P) (Speckled)
BATTALION STOCKADE
 RIVER HILL TRAFFIC JAM 26T (P) (Speckled)
Dam: SIX STAR 26T LIGHTNING LADY E204 (ET) (Speckled)
 STAR BANK 54R (P) (White)

Stockade M3 remains one of the best bulls we have bred to date. He carried all the desirable attributes of his sire. Starting at the ground with great feet, excellent structure, and balance with plenty of neck extension. He was a well-muscled sire with great mobility and a real sires presence complemented by a very quiet nature. The 2018 Scone Sale Champion and top priced bull selling for a sale record of \$26,000 to Hidden Valley Speckle Park.



BAT Q43

HS UNTAPPED 3A (Speckled)
Sire: JOHNER STOCK FARM UNMARKED 2D (P) (Black)
 JENCREST YAVONNA 6Y (P) (Speckled)
BATTALION UPPER CLASS
 SPOTS 'N SPROUTS STANDS ALONE (P) (White)
Dam: BATTALION HEARTBREAKER M1 (AI) (ET) (P) (White)
 SIX STAR 13U HEARTBREAKER F13 (AI) (ET) (Speckled)

The deepest bodied Speckle Bull we have bred! Upper Class Q43 had the underrated ability to put on weight at an exceptional rate whilst receiving a considerably less amount of supplement feeding than his contemporary group. He had a 42cm Scrotal with big IMF and EMA, a real herd/breed improver. His daughters in this catalogue indicate he will have a very positive influential role to play. Upper Class was the top priced bull at the Scone Sale in 2021 at \$20,000 to Ivery Downs Speckle Park.



US 1D

RIVER HILL 68L STRIKER 50U (P) (Speckled)
Sire: RIVER HILL 50U ALL IN 60A (White)
 RIVER HILL SHOW ME OFF 60S (P) (Speckled)
UNDERHILL ALL OUT 1D
 CDS FARMS PAUL 2M (Speckled)
Dam: SPOTS 'N SPROUTS 10S (P) (Speckled)
 JANE OF P.A.R. 12J (Speckled)

Sire of our all-time highest record priced female. We decided to use 'All Out' in our herd due to his structural correctness and Canadian track record where several judges rated him consistently the best bull calf in Canada in 2016.



FCF L1

STAR BANK LACERTA 68L (Speckled)
Sire: ALMARLEA 68G LACERTA F156 (ET) (Speckled)
 STAR BANK 68G (Speckled)
FISH CREEK FARM THUNDERSTRUCK L1
 CODIAK CRIKEY GNK 13U (P) (Speckled)
Dam: WARATAH MELISA G34 (ET) (Speckled)
 CODIAK MELISA RKW 64M (Speckled)

This bull goes back to a very fertile and successful Codiak Melisa 64M cow family. This cow line has good milk and mothering abilities plus consistently places in the show winning circles due to functional and structural correctness. We identified that the Melisa cow line combined especially well with the growthy and structural improving Lacerta foundation sire line.



DHB 24E

RAVENWORTH KLEOS 3Y (P) (Speckled)
Sire: RAVENWORTH INVICTUS 103C (P) (Speckled)
 RAVENWORTH NORTHERN STAR 101A (P) (Speckled)
WOLF LAKE BOB 24E
 RIVER HILL 12X ZAAR 7Z (P) (Speckled)
Dam: RAVENWORTH ASPEN 118C (P) (Speckled)
 SPOTS 'N SPROUTS 31A (P) (Speckled)

Bob bred for us a nice square, soft and beefy type. His progeny have a bit more fat cover which we felt was beneficial for the New England winters and producing better MSA graded beef. We really admire the depth of body in this sire.



LAF 20F

RIVER HILL 26T YAGER 99Y (Leopard)
Sire: RIVER HILL BACKGROUNDER 025B (Speckled)
 RIVER HILL 64S WHISPER 25W (P) (Leopard)
UNLIMITEDSPOTS GRNWD FUTURE20F
 P.A.R. XCALABAR 6X (P) (Speckled)
Dam: BLACKIE RAINA OF P.A.R. 21Z (Black)
 RAINA OF P.A.R. 21R (P) (Speckled)

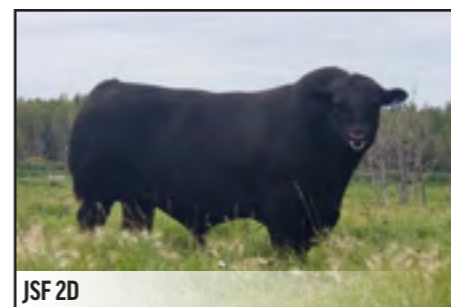
Length of body and a fantastic strong top line attracted us to this bull. There is more weight in length without compromising calving. A free moving sire with great structure and presence.



PMR L11

STAR BANK KING GEORGE 82U (P) (Speckled)
Sire: SIX STAR 82U ROYAL FLESH 101Y (AI) (ET) (P) (Speckled)
 STAR BANK 53R (P) (White)
PREMIER 101Y LOGIC L11
 MAINSTREAM ELDORADO E11 (ET) (P) (White)
Dam: SPKNZ H2 (P) (White)
 SPKNZ E36 (ET) (P) (Speckled)

A bull with breed-leading growth and weight in his progeny. Commercial farmers are asking for bulls that have explosive high growth. We used Premier Logic to add growth and carcase weight into our commercially relevant bull breeding program. This is the sire that breeds the larger framed cattle if you are chasing heavier finishing weights.



JSF 2D

A & W 15R (P) (Leopard)
Sire: HS UNTAPPED 3A (Speckled)
 NOTTA 2R PRETENDER 4T (P) (Speckled)
JOHNER STOCK FARM UNMARKED 2D
 UPTO SPECS ULYSSES 25U (P) (Speckled)
Dam: JENCREST YAVONNA 6Y (P) (Speckled)
 RITA OF P.A.R. 14R (P) (Speckled)

He is a son of one of the foundation bulls, A&W 15R. Untapped bred some great cows in the Speckle Park breed which convinced us to add him into our herd building phase. He also was holding up his structural soundness to become a Double grand champion bull at the Canadian Western Agribition show in 2014 and 2015. The extraordinary depth and power in this bull is exactly the style we strive to breed.



BAT Q44

HS UNTAPPED 3A (Speckled)
Sire: JOHNER STOCK FARM UNMARKED 2D (P) (Black)
 JENCREST YAVONNA 6Y (P) (Speckled)
BATTALION UTAH
 SPOTS 'N SPROUTS STANDS ALONE (P) (White)
Dam: BATTALION HEARTBREAKER M1 (AI) (ET) (P) (White)
 SIX STAR 13U HEARTBREAKER F13 (AI) (ET) (Speckled)

Hands down the quietest bull we have ever bred or handled. Temperament is a trait we place extremely high dollar value on. Utah was not only quiet but a real physical specimen. He was one of the longer bulls we've bred with a tremendous top line and spring of rib. He breeds low birthweight calves that develop quickly, making them easy to market at any age. Having no intentions of selling Utah it took \$45,000 from Celamba Speckle Park to let him go privately.



JKH 300X

HWY.4 SPECKLE PARK 20K (Speckled)
Sire: STYALS LIGHTNING LADD 14P (P) (Speckled)
 LIGHTNING LADY 10C (Speckled)
SPOTS 'N SPROUTS STANDS ALONE
 STAR BANK LACERTA 68L (Speckled)
Dam: SPOTS 'N SPROUTS 2R (P) (Speckled)
 SPOTS 'N SPROUTS 21L (Speckled)

A Canadian Agribition Grand Champion in his day. The sire of our famous Battalion Heartbreaker M1 cow, and a bull we can't have too much of in our herd. Every herd would be better off with Stands Alone in it! We have seen Stands Alone fix, improve and complement udder quality, feet, and growth. He also adds carcass and volume. Unfortunately, there is almost no semen left of him and of the few straws out there, no one wants to sell them, or they are unaffordable. We have been fortunate to have Stands Alone genetics proliferate in our herd and are able to share some of these descendants with you.



BED 54Z

RIVER HILL TRAFFIC JAM 26T (P) (Speckled)
Sire: RIVER HILL 26T WALKER 60W (P) (Speckled)
 RIVER HILL SHOW ME OFF 60S (P) (Speckled)
RIVER HILL 60W LINE DRIVE 54Z
 STAR BANK LACERTA 68L (Speckled)
Dam: NOTTA PHO-FINISH 54P (Speckled)
 STAR BANK LEONID NIGHT 54L (Speckled)

Line Drive has the magic combination of high growth with high IMF that we like to have in our commercial relevant bulls. These complimentary traits are highly sought after by feedlots. This powerful, successful, and proven genetic match between Pho-Finish 54P and River Hill Walker 60W was a must use pedigree in our stud breeding program.



WGS E11

SPOTS 'N SPROUTS JUNO 103J (Speckled)
Sire: STAR BANK LACERTA 68L (Speckled)
 STAR BANK 55H (Speckled)
WATTLE GROVE MR BUSINESS E11
 CALAMASUE 4M (Speckled)
Dam: MOOVIN ZPOTZ SUNSHINE 5S (P) (Speckled)
 LEIGH-AL-ANN BELLE HEIR 1D (Speckled)

Longevity and structural soundness are valuable traits in this expensive bull market. We added Mr Business into our breeding program to strengthen soundness and help lengthen productive life with no compromise on growth.



GNK 52B

CODIAK PHLEP GNK 3P (Speckled)
Sire: CODIAK OSCAR GNK 8S (P) (Leopard)
 CODIAK MATEUSA RKW 63M (White)
CODIAK SPENCER GNK 52B
 RAVEN MEADOWS MAGNUM 10N (Speckled)
Dam: CODIAK WILLA GNK 13W (P) (Speckled)
 CODIAK MISS CARLA RKW 21M (White)

He is a good squarely made Oscar son with an unrestricted genetic breeding profile. His progeny are easy doing with an early maturity pattern and have a great Eye Muscle to body weight ratio.



CAJA 1B

UNEEDA WALTER 21W (P) (Speckled)
Sire: UNEEDA ZAPPER 13Z (P) (Speckled)
 MISTY FRITZ OF P.A.R. 13M (Leopard)
CAJA ZEPPELIN 1B
 RIVER HILL 26T WALKER 60W (P) (Speckled)
Dam: NOTTA 60W PHOTO-FINISH 1Z (P) (Speckled)
 NOTTA PHO-FINISH 54P (Speckled)

Zeppelin bred some really good and influential sons, including the famous Notta Hawkeye. His daughters make good maternal females. It is an added bonus that he was the two times Grand Champion in Canada.



**PERSONALISED SERVICE
LEADING BY RESULTS**

- Est. 1958
- »Regular Cattle Sales
- »Regular Prime Lamb & Sheep Sales
- »Stud Stock Sales
- »Selling to Feedlots
- »Consignment of Stock
- »Market Appraisals
- »Auctions Plus
- »Rural Property Sales

Colin Say & Co Pty Ltd. Licensed Auctioneers - Stock, Station & Real Estate Agents
 118 Wentworth Street Glen Innes NSW 2370
 (02) 6732 1266 www.colinsay.com.au office@colinsay.com.au



Steve Daley 0400 406 667
 Craig Thomas 0428 669 500

Shad Bailey 0458 322 283
 Nathan Purvis 0427 324 078

Colin Say & Co. Pty Ltd **rmanetwork** Accredited Member





COUNTRY WIDE
PROPERTY



VIEW OUR LISTINGS



- Residential Properties • Rural Properties • Property Management
- Clearing Sales • Auctions • Market Appraisals

Ph: 02 6732 3635

office@countrywideproperty.net.au

210 Grey St, GLEN INNES NSW 2370

104 Bradley St, GUYRA NSW 2365

www.countrywideproperty.net.au



www.jamesiesfuelandfix.repcoservice.net

Ph: 02 6732 1171



MVRL35318

All new car Servicing
(Retaining your Statuary Warranty)

Wheel Alignments

Batteries

Child Restraints

Roadworthy Inspections

Brake & Clutch Services

Exhaust Repair & Manufacture

4x4 Exhaust Systems



FEMALE OFFERING

2023 Inaugural Sale



1.

BATTALION AMY'S GIRL S30

CLICK ON THE LOT PHOTOS TO BE TAKEN TO THE VIDEOS



BUYER _____ PRICE \$ _____

ALMARLEA 68G LACERTA F156 (ET) (Speckled)

Sire: **FISH CREEK FARM THUNDERSTRUCK L1 (AI) (ET) (P) (Speckled)**

WARATAH MELISA G34 (ET) (Speckled)

BATTALION AMY'S GIRL S30

RIVER HILL 26T WALKER 60W (P) (Speckled)

Dam: **ALMARLEA 60W AMY'S GIRL J203 (AI) (ET) (Speckled)**

ALMARLEA 68L AMYS GIRL E6 (ET) (Speckled)

GENETIC PROFILE

Myostatin	C
Coat	RGF
Poll Status	PCPC
Leptin	C/C

	GL	BW	200	400	600	MCW	Milk	SS	CWT	EMA	Rib	Rump	RBV%	IMF%
EBV	0.3	1.3	16	28	29	25	9	0.5	22	0.6	-0.6	-0.8	0.5	-0.3
Accuracy	44	64	63	67	67	56	38	40	57	41	59	58	54	49

We aim to breed cattle that are structurally sound and productive and it's no secret we are firm believers of breeding cattle with extra shape and thickness, Amy's Girl S30 definitely has that covered. A beautifully balanced free moving female that has that look of a great cow in years to come. She ranks in the Top 1% of the breed for Milk. Joined to AAA Walker Frontline M24 on the 14/11/2022, calf due in August.



SIRE



DAM

IDENTIFIER
BAT S30

DOB
07/03/2021

COLOUR
White



2.

BATTALION HEARTBREAKER R18



BUYER _____ PRICE \$ _____

STAR BANK LACERTA 68L (Speckled)

Sire: **WATTLE GROVE MR BUSINESS E11 (ET) (Speckled)**

MOOVIN ZPOTZ SUNSHINE 5S (P) (Speckled)

BATTALION HEARTBREAKER R18

JOHNER STOCK FARM UNMARKED 2D (P) (Black)

Dam: **BATTALION HEARTBREAKER P6 (AI) (ET) (P) (Speckled)**

BATTALION HEARTBREAKER M1 (AI) (ET) (P) (White)

GENETIC PROFILE

Myostatin	C
Coat	RGF
Poll Status	PCPC
Leptin	C/T

	GL	BW	200	400	600	MCW	Milk	SS	CWT	EMA	Rib	Rump	RBV%	IMF%
EBV	0.7	1.4	12	21	26	26	2	0.2	15	0.7	1.5	2.1	-1.1	0.3
Accuracy	45	68	60	59	63	52	33	43	51	39	52	52	50	46

The 1st of our most prolific female line to enter the ring. Heartbreaker R18 is a beautiful representation of the consistent quality we have become accustomed to see in this line. She is a stylish, feminine heifer that has a terrific top line and width through the backend. We are holding no punches by offering this heifer up early in the sale. R18's dam topped the Scone Sale in 2020 for \$30,000. She has two full ET brothers in the sale lots 19 and 30. Joined to Wolf Lake Bob 24E on the 03/11/2022.



SIRE



DAM

IDENTIFIER
BAT R18

DOB
18/12/2020

COLOUR
White



3.

BATTALION HEARTBREAKER S23



IDENTIFIER
BAT S23

DOB
21/01/2021

COLOUR
White

BUYER _____ PRICE \$ _____

RIVER HILL 50U ALL IN 60A (White)
 Sire: **UNDERHILL ALL OUT 1D (P) (Speckled)**
 SPOTS 'N SPROUTS 10S (P) (Speckled)

BATTALION HEARTBREAKER S23
 SPOTS 'N SPROUTS STANDS ALONE (P) (White)
 Dam: **BATTALION HEARTBREAKER M1 (AI) (ET) (P) (White)**
 SIX STAR 13U HEARTBREAKER F13 (AI) (ET) (Speckled)

GENETIC PROFILE	
Myostatin	C
Coat	RGF
Poll Status	PCPC
Leptin	C/C

	GL	BW	200	400	600	MCW	Milk	SS	CWT	EMA	Rib	Rump	RBV%	IMF%
EBV	0.3	2.2	16	28	43	47	3	0.4	26	1.3	-1.4	-1.9	1.5	-0.6
Accuracy	45	65	64	68	68	57	33	50	59	44	61	61	57	53

Looking for something special? This is a big powerful Heartbreaker M1 daughter, with extra growth, that will lift your average cow size. Full ET sisters B. Heartbreaker R16 sold for the current WORLD RECORD price of \$100,000 to Ivery Downs Speckle Park and B. Heartbreaker S24 sold for \$28,000 to Sandra Jane Speckle Park in 2022. S23 ranks in the top 10% of the breed for EMA and Retail Beef Yield plus top 15% for 600 Day and Carcase Weight. Has been running with Battalion Sheriff R55 (Lot 29) from 1/12/22 to 21/12/2022.



ET Sister: BAT R16 (sold \$100,000)



DAM



BATTALION PHO FINISH S38

4.



IDENTIFIER
BAT S38

DOB
29/08/2021

COLOUR
Speckled

BUYER _____ PRICE \$ _____

JOHNER STOCK FARM UNMARKED 2D (P) (Black)
 Sire: **BATTALION UPPER CLASS (ET) (Speckled)**
 BATTALION HEARTBREAKER M1 (AI) (ET) (P) (White)

BATTALION PHO FINISH S38
 JOHNER STOCK FARM TRADE SECRET (White)
 Dam: **WARATAH PHO-FINISH P145 (AI) (ET) (Leopard)**
 WARATAH PHO-FINISH J155 (AI) (ET) (P) (Speckled)

GENETIC PROFILE	
Myostatin	F
Coat	RGF
Poll Status	HPC
Leptin	C/C

	GL	BW	200	400	600	MCW	Milk	SS	CWT	EMA	Rib	Rump	RBV%	IMF%
EBV	-1	1.2	19	31	41	41	2	0.5	31	2.3	0.3	0.3	0.7	0.1
Accuracy	37	51	55	63	58	46	29	42	53	40	58	57	53	49

This is a heifer that stands out in our opinion, in the flesh and on paper. It's rare to see animals measure raw data at the top of their contemporary group for both EMA and IMF but this heifer has done just that, recording 94cm EMA and 7.7% IMF back in December 2022. This genetic package of Pho Finish P145 X Upper Class Q43 is easily one of the most consistent and impressive combinations we have seen. This was one of the harder decisions we have made to offer her for sale. She ranks in the top 1% of the breed for EMA, Top 5% for Carcase Weight, and Top 10% for Gestation Length. Full ET sister to lots 5, 10, 11 and 16.



SIRE



DAM



5.

BATTALION PHO FINISH S37



BUYER _____ PRICE \$ _____

JOHNER STOCK FARM UNMARKED 2D (P) (Black)

Sire: **BATTALION UPPER CLASS (ET) (Speckled)**

BATTALION HEARTBREAKER M1 (AI) (ET) (P) (White)

BATTALION PHO FINISH S37

JOHNER STOCK FARM TRADE SECRET (White)

Dam: **WARATAH PHO-FINISH P145 (AI) (ET) (Leopard)**

WARATAH PHO-FINISH J155 (AI) (ET) (P) (Speckled)

GENETIC PROFILE

Myostatin	F
Coat	RGF
Poll Status	PCPC
Leptin	C/C

	GL	BW	200	400	600	MCW	Milk	SS	CWT	EMA	Rib	Rump	RBV%	IMF%
EBV	-1	1.1	18	31	41	40	2	0.4	28	1.8	0.6	0.8	0	0.2
Accuracy	37	51	55	63	58	46	29	42	53	40	55	55	52	48

Pho Finish P145 x Upperclass Q43 just does not miss. Pho Finish S37 has the extra depth of body that we strive to breed, these are the type of females that go on and perform in the paddock with lower feed intake required. It's this style of female that holds on and maintains body condition for longer in tougher times. She ranks in the top 5% of the breed for EMA and Top 10% for Gestation Length and Carcase Weight. Full ET sister to lots 4, 10, 11 and 16.



SIRE



DAM

IDENTIFIER
BAT S37

DOB
27/08/2021

COLOUR
Speckled



6.

BATTALION QUEEN ALONE S44



BUYER _____ PRICE \$ _____

RIVER HILL 26T WALKER 60W (P) (Speckled)

Sire: **RIVER HILL 60W LINE DRIVE 54Z (AI) (Leopard)**

NOTTA PHO-FINISH 54P (Speckled)

BATTALION QUEEN ALONE S44

SPOTS 'N SPROUTS STANDS ALONE (P) (White)

Dam: **MT ECCLES QUEEN ALONE (AI) (ET) (Speckled)**

WARATAH E25 (ET) (P) (Black)

GENETIC PROFILE

Myostatin	F
Coat	RGF
Poll Status	PCPC
Leptin	T/T

	GL	BW	200	400	600	MCW	Milk	SS	CWT	EMA	Rib	Rump	RBV%	IMF%
EBV	0.2	2.5	24	39	52	59	8	0.3	32	0	-1	-1.4	0.2	0.3
Accuracy	53	68	68	71	68	58	50	59	63	52	66	66	63	59

An exciting pedigree of proven performers in this heifer. Mount Eccles Queen Alone K12 was undoubtedly the best cow to have been bred by Mount Eccles. When you combine her with the great Notta Pho Finish 54P cow line through her son Riverhill Line Drive, one of the best to come out of the highly regarded Riverhill herd in Canada, you have a pedigree that has the runs on the board. This heifer will give you powerful growth with a later maturity pattern as they keep growing into big roomy cows. Big and Powerful! She ranks in the Top 1% of the breed for milk and Top 5% for 200, 400, 600 day and Carcase weight. Full ET sister to lots 13, 17, 34, 35 and B. Longbow who is the new resident sire at Battalion.



ET Brother: Battalion Longbow



DAM

IDENTIFIER
BAT S44

DOB
03/09/2021

COLOUR
White



BATTALION UNIQUE S50



BUYER _____ PRICE \$ _____

CODIAK OSCAR GNK 8S (P) (Leopard)

Sire: **CODIAK SPENCER GNK 52B (P) (Leopard)**

CODIAK WILLA GNK 13W (P) (Speckled)

BATTALION UNIQUE S50

WATTLE GROVE MR BUSINESS E11 (ET) (Speckled)

Dam: **THREE WAY BUSINESS SENSE (AI) (ET) (Speckled)**

THREE WAY PRINCESS GRACE (AI) (ET) (P) (Leopard)

GENETIC PROFILE

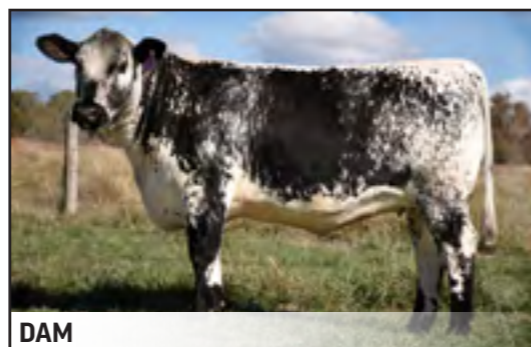
Myostatin	F
Coat	RGF
Poll Status	PCPC
Leptin	C/C

	GL	BW	200	400	600	MCW	Milk	SS	CWT	EMA	Rib	Rump	RBV%	IMF%
EBV	0.5	2.2	15	22	33	33	1	-0.2	20	1.6	-0.4	-0.5	1.1	-0.6
Accuracy	45	61	62	67	63	52	38	53	58	46	61	61	58	54

We've always been impressed with the performance in this young heifer, having always been among the top females for growth and looks to have plenty more left in her. She is the only Codiak Spencer daughter in the sale and stands comfortably among our top picks in the heifer line-up. She is offered for sale with the confidence of a top end future donor having been successfully flushed once, retrieving 10 viable embryos for in herd use. She ranks in the Top 5% for EMA. Full ET sister to Lot 40.



SIRE



DAM

BATTALION HEARTBREAKER S47



BUYER _____ PRICE \$ _____

HS UNTAPPED 3A (Speckled)

Sire: **JOHNER STOCK FARM UNMARKED 2D (P) (Black)**

JENCREST YAVONNA 6Y (P) (Speckled)

BATTALION HEARTBREAKER S47

SPOTS 'N SPROUTS STANDS ALONE (P) (White)

Dam: **BATTALION HEARTBREAKER M1 (AI) (ET) (P) (White)**

SIX STAR 13U HEARTBREAKER F13 (AI) (ET) (Speckled)

GENETIC PROFILE

Myostatin	F
Coat	RGF
Poll Status	PCPC
Leptin	C/C

	GL	BW	200	400	600	MCW	Milk	SS	CWT	EMA	Rib	Rump	RBV%	IMF%
EBV	1	1.3	14	20	25	32	1	0.3	16	-0.1	1.1	1.5	-1.1	0.5
Accuracy	50	65	65	70	65	53	37	57	60	49	64	64	61	57

Heartbreaker S47 has one of the most highly sort after pedigrees that we have produced. Previous sale results of full ET siblings have proven the elite quality of this combination, they include B. Heartbreaker P6 sold to BAW BAW Speckle Park for \$30,000 (top price heifer at the Scone Sale 2020), B. Utah Q44 sold to Celamba Speckle Park for \$45,000 (2021 Australian RECORD price at the time) and B. Upper Class Q43 sold to Ivery Downs Speckle Park for \$20,000 (top price Bull at the Scone Sale 2021). Also, full Sibling Embryos sold for \$5050 per embryo to Toebelle Speckle Park (2020 WORLD RECORD price at the time). S47 ranks in the top 10% of the breed for IMF. She is also a full ET sister to lots 37 and 39.



ET Sister BAT P6 (sold \$30,000)



DAM

IDENTIFIER
BAT S50

DOB
10/09/2021

COLOUR
Speckled



IDENTIFIER
BAT S47

DOB
05/09/2021

COLOUR
Speckled



9.

BATTALION HEARTBREAKER S39



BUYER _____ PRICE \$ _____

RIVER HILL BACKGROUNDER 025B (Speckled)

Sire: **UNLIMITEDSPOTS GRNWD FUTURE20F (Speckled)**

BLACKIE RAINA OF P.A.R. 21Z (Black)

BATTALION HEARTBREAKER S39

SPOTS 'N SPROUTS STANDS ALONE (P) (White)

Dam: **BATTALION HEARTBREAKER M1 (AI) (ET) (P) (White)**

SIX STAR 13U HEARTBREAKER F13 (AI) (ET) (Speckled)

GENETIC PROFILE

Myostatin	F
Coat	RGF
Poll Status	PCPC
Leptin	C/T

	GL	BW	200	400	600	MCW	Milk	SS	CWT	EMA	Rib	Rump	RBV%	IMF%
EBV	-0.1	1	13	16	23	25	4	-0.1	11	-0.6	0.1	0.1	-0.6	0.1
Accuracy	36	60	59	65	59	45	30	43	53	41	58	58	54	50

Heartbreaker S39 is a relatively new genetic combination sired by the very structurally correct Unlimited Spots Greenwood Future 20F. You can see a very similar phenotype in this young heifer. With our elite matriarch Heartbreaker M1 now deceased, her direct daughters will inevitably become harder to secure. It's not by accident that 6 of Heartbreaker M1's daughters sold at auction in 2022 to AVERAGE \$49,500 each! This line maintains an unbelievably high standard. She is a full ET sister to lot 38.



SIRE



DAM

IDENTIFIER
BAT S39

DOB
29/08/2021

COLOUR
Speckled



10.

BATTALION PHO FINISH S36



BUYER _____ PRICE \$ _____

JOHNER STOCK FARM UNMARKED 2D (P) (Black)

Sire: **BATTALION UPPER CLASS (ET) (Speckled)**

BATTALION HEARTBREAKER M1 (AI) (ET) (P) (White)

BATTALION PHO FINISH S36

JOHNER STOCK FARM TRADE SECRET (White)

Dam: **WARATAH PHO-FINISH P145 (AI) (ET) (Leopard)**

WARATAH PHO-FINISH J155 (AI) (ET) (P) (Speckled)

GENETIC PROFILE

Myostatin	F
Coat	RGF
Poll Status	HPC
Leptin	C/C

	GL	BW	200	400	600	MCW	Milk	SS	CWT	EMA	Rib	Rump	RBV%	IMF%
EBV	-1	1.1	18	29	38	37	2	0.5	27	1.5	-0.3	-0.5	0.8	-0.1
Accuracy	37	51	55	63	58	46	29	42	53	40	58	57	53	49

This Pho Finish heifer might just have a touch more class with a beautifully refined front end and neck extension. She is one of those females you always see standing up proudly in the paddock and parading around like she is at a show, this usually goes hand in hand with correct structure which is definitely evident in this heifer. She ranks in the Top 5% of the breed for EMA and Top 10% for Gestation Length and Carcass weight. Full ET sister to lots 4, 5, 11 and 16.



SIRE



DAM

IDENTIFIER
BAT S36

DOB
27/08/2021

COLOUR
Speckled



BATTALION PHO FINISH S40



BUYER _____ PRICE \$ _____

JOHNER STOCK FARM UNMARKED 2D (P) (Black)

Sire: **BATTALION UPPER CLASS (ET) (Speckled)**

BATTALION HEARTBREAKER M1 (AI) (ET) (P) (White)

BATTALION PHO FINISH S40

JOHNER STOCK FARM TRADE SECRET (White)

Dam: **WARATAH PHO-FINISH P145 (AI) (ET) (Leopard)**

WARATAH PHO-FINISH J155 (AI) (ET) (P) (Speckled)

GENETIC PROFILE

Myostatin	F
Coat	RGF
Poll Status	HPC
Leptin	C/T

	GL	BW	200	400	600	MCW	Milk	SS	CWT	EMA	Rib	Rump	RBV%	IMF%
EBV	-0.9	0.9	16	28	38	35	2	0.4	27	1.8	0	0	0.5	0.1
Accuracy	37	51	55	63	58	46	29	42	53	40	58	57	53	49

You don't need to look at the pedigree to see this is a full sister to the other Pho Finish heifers in this catalogue. They are all so consistent and tick a lot of boxes. She is proven again by good raw data collected back in December 2022, with her EMA of 88sq cm and a massive 8.1% IMF. The numbers don't lie, these sisters possess the qualities we strive to produce for the beef industry. She ranks in the Top 5% for EMA, Top 10% for Carcase weight and Top 15% for Gestation Length. Full ET sister to lots 4, 5, 10 and 16.



SIRE



DAM

IDENTIFIER
BAT S40

DOB
31/08/2021

COLOUR
Speckled



BATTALION GRACELANDS S41



BUYER _____ PRICE \$ _____

SIX STAR 82U ROYAL FLESH 101Y (AI) (ET) (P) (Speckled)

Sire: **PREMIER 101Y LOGIC L11 (AI) (ET) (Leopard)**

SPKNZ H2 (P) (White)

BATTALION GRACELANDS S41

SPOTS 'N SPROUTS STANDS ALONE (P) (White)

Dam: **BATTALION GRACELANDS P3 (AI) (ET) (P) (White)**

THREE WAY GRACELANDS (AI) (ET) (P) (Speckled)

GENETIC PROFILE

Myostatin	F
Coat	RGF
Poll Status	PCPC
Leptin	C/C

	GL	BW	200	400	600	MCW	Milk	SS	CWT	EMA	Rib	Rump	RBV%	IMF%
EBV	-0.6	3.1	26	46	60	58	4	-0.1	38	2.2	-1	-1.5	1.5	-0.5
Accuracy	48	63	65	69	65	53	43	53	60	48	63	63	60	56

The only Gracelands P3 and Premier 101Y Logic heifer in the sale. She is thick and feminine already, showing plenty of udder development. Check out her two full brothers in this sale, there is high end quality in this pedigree being displayed in both the males and females. She Ranks in the Top 1% of the breed for 400 day, 600 day growth and EMA plus Top 5% for 200 day weaning weight. Full ET sister to lots 34 and 36.



SIRE



DAM

IDENTIFIER
BAT S41

DOB
01/09/2021

COLOUR
White



13.

BATTALION QUEEN ALONE S48



BUYER _____ PRICE \$ _____

RIVER HILL 26T WALKER 60W (P) (Speckled)

Sire: RIVER HILL 60W LINE DRIVE 54Z (AI) (Leopard)

NOTTA PHO-FINISH 54P (Speckled)

BATTALION QUEEN ALONE S48

SPOTS 'N SPROUTS STANDS ALONE (P) (White)

Dam: MT ECCLES QUEEN ALONE (AI) (ET) (Speckled)

WARATAH E25 (ET) (P) (Black)

GENETIC PROFILE

Myostatin **F**

Coat **RGF**

Poll Status **PCPC**

Leptin **C/T**

	GL	BW	200	400	600	MCW	Milk	SS	CWT	EMA	Rib	Rump	RBV%	IMF%
EBV	0.2	2.2	22	34	47	54	8	0.3	29	-0.3	-1.7	-2.4	0.9	-0.2
Accuracy	53	68	68	71	68	58	50	59	63	52	66	66	63	59

Very similar in type to her sisters in the sale with a later maturity pattern. She will grow and develop into a large framed female whilst maintaining femininity. Her mother weighed 744kg as a 5 year old cow. S48 ranks in the top 10% of the breed for EMA, Gestation Length and Carcase Weight. Full ET sister to lots 6, 17, 33, 35 and B. Longbow new resident sire at Battalion.



SIRE



DAM

IDENTIFIER
BAT S48

DOB
05/09/2021

COLOUR
White



BATTALION SPANISH ANGEL S43

14.



BUYER _____ PRICE \$ _____

RIVER HILL PATH FINDER 22P (Speckled)

Sire: RIVER HILL SAMSON 25S (S) (Speckled)

RIVER HILL PRIDE 'N JOY 25P (White)

BATTALION SPANISH ANGEL S43

ALMARLEA 21K LACERTA E7 (ET)

Dam: ALMARLEA E7 SPANISH ANGEL K7 (Speckled)

ALMARLEA 82U SPANISH ANGEL F163 (ET) (Black)

GENETIC PROFILE

Myostatin **C**

Coat **RGF**

Poll Status **HPC**

Leptin **T/T**

	GL	BW	200	400	600	MCW	Milk	SS	CWT	EMA	Rib	Rump	RBV%	IMF%
EBV	-0.2	1.7	15	24	31	26	6	0.5	19	1.6	0.8	1.1	-0.2	0.1
Accuracy	38	62	60	64	59	45	28	30	51	35	55	55	50	46

Here is a heifer with loads of performance and shape. She measured some impressive raw data back in December 2022 with a very respectable EMA of 87sq cm and 7.5% for IMF. A beautifully balanced heifer with plenty of eye appeal. Her sire is a bull we always admired and would love to see more of in Australia. She ranks in the Top 5% for EMA and Top 10% for milk.



SIRE



SIRE of DAM

IDENTIFIER
BAT S43

DOB
02/09/2021

COLOUR
Speckled



15.

BATTALION KARA S33



BUYER _____ PRICE \$ _____

JOHNER STOCK FARM UNMARKED 2D (P) (Black)

Sire: **BATTALION UTAH (ET) (Speckled)**

BATTALION HEARTBREAKER M1 (AI) (ET) (P) (White)

BATTALION KARA S33

CODIAK SO LONG GEORGE GNK 6Z (P) (White)

Dam: **BATTALION KARA P4 (AI) (ET) (P) (Speckled)**

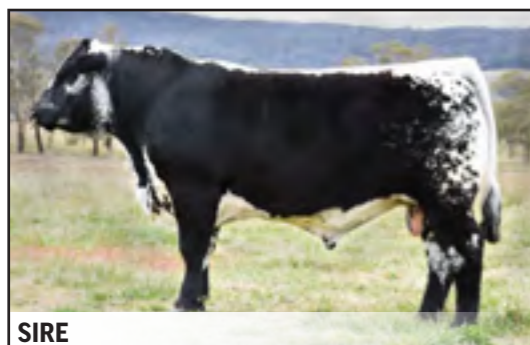
SIX STAR 68L KARA D8 (ET) (Black)

GENETIC PROFILE

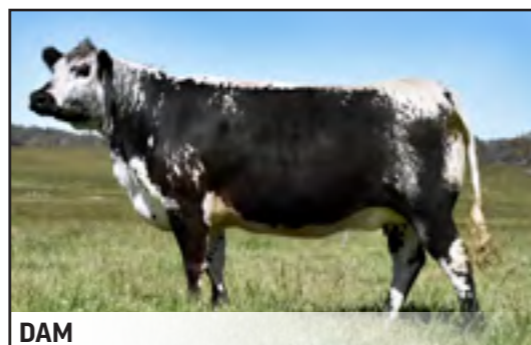
Myostatin	C
Coat	RGF
Poll Status	PCPC
Leptin	C/C

	GL	BW	200	400	600	MCW	Milk	SS	CWT	EMA	Rib	Rump	RBV%	IMF%
EBV	0.6	1.6	13	21	26	25	3	0.8	15	0.4	0.3	0.3	-0.3	0.1
Accuracy	38	49	46	45	45	38	32	41	39	32	38	38	37	35

The only Kara P4 heifer in the sale, she is thick and deep with a naturally quiet nature, consistent with Kara P4's progeny. Sired by Battalion Utah Q44 who sold to Celamba Speckle Park for \$45,000. We expect she will breed lower birth weight calves that develop quickly and shape up early. She is well suited for breeding low maintenance animals that maintain body condition easily. She ranks in the Top 10% for Scrotal Circumference. Joined to Battalion Northerly R54 on the 20/11/2022. Full ET sister to lots 26 and 28.



SIRE



DAM

IDENTIFIER
BAT S33

DOB
08/05/2021

COLOUR
White



BATTALION PHO FINISH S46

16.



BUYER _____ PRICE \$ _____

JOHNER STOCK FARM UNMARKED 2D (P) (Black)

Sire: **BATTALION UPPER CLASS (ET) (Speckled)**

BATTALION HEARTBREAKER M1 (AI) (ET) (P) (White)

BATTALION PHO FINISH S46

JOHNER STOCK FARM TRADE SECRET (White)

Dam: **WARATAH PHO-FINISH P145 (AI) (ET) (Leopard)**

WARATAH PHO-FINISH J155 (AI) (ET) (P) (Speckled)

GENETIC PROFILE

Myostatin	F
Coat	RGF
Poll Status	PCPC
Leptin	C/C

	GL	BW	200	400	600	MCW	Milk	SS	CWT	EMA	Rib	Rump	RBV%	IMF%
EBV	-1	1.1	18	29	38	37	2	0.5	27	1.2	-0.5	-0.8	0.8	-0.1
Accuracy	37	51	55	63	58	46	29	42	53	40	55	55	52	48

If you have missed out on a Pho Finish heifer don't worry, they are all so even, we saved a good one for late in the heifer run. She is soft and feminine with a great outlook. These Upper Class daughters have been so consistent and impressive, his progeny will only continue to increase in demand. She ranks in the top 1% of the breed for milk, Top 10% for 400 day, 600 day, Mature Cow weight and Carcase weight plus Top 15% for 200 day. Full ET sister to lots 4, 5, 10 and 11.



SIRE



DAM

IDENTIFIER
BAT S46

DOB
04/09/2021

COLOUR
Speckled



17.

BATTALION QUEEN ALONE S52



BUYER _____ PRICE \$ _____

RIVER HILL 26T WALKER 60W (P) (Speckled)

Sire: RIVER HILL 60W LINE DRIVE 54Z (AI) (Leopard)

NOTTA PHO-FINISH 54P (Speckled)

BATTALION QUEEN ALONE S52

SPOTS 'N SPROUTS STANDS ALONE (P) (White)

Dam: MT ECCLES QUEEN ALONE (AI) (ET) (Speckled)

WARATAH E25 (ET) (P) (Black)

GENETIC PROFILE

Myostatin	C
Coat	RGF
Poll Status	PCPC
Leptin	C/T

	GL	BW	200	400	600	MCW	Milk	SS	CWT	EMA	Rib	Rump	RBV%	IMF%
EBV	0.2	2.4	23	39	54	60	8	0.2	34	0.6	-0.8	-1.2	0.4	0.3
Accuracy	53	67	67	70	67	57	50	59	62	52	65	64	62	58

The second youngest heifer in the catalogue and one that looks like she will be very impressive as she matures. With her proven elite parentage, she could easily be the dark horse in the sale. She has a very desirable quiet nature and is pushing along nicely on growth for age. Full ET sister to lots 6, 13, 33, 35 and B. Longbow S78 new resident sire at Battalion. She also ranks in the Top 1% of the breed for Milk, Top 5% for 400, 600 day, Mature Cow Weight and Carcase Weight and Top 10% for 200 Day.



IDENTIFIER
BAT S52

DOB
07/11/2021

COLOUR
Speckled



BATTALION UNIQUE S54

18.



BUYER _____ PRICE \$ _____

JOHNER STOCK FARM UNMARKED 2D (P) (Black)

Sire: BATTALION UPPER CLASS (ET) (Speckled)

BATTALION HEARTBREAKER M1 (AI) (ET) (P) (White)

BATTALION UNIQUE S54

WATTLE GROVE MR BUSINESS E11 (ET) (Speckled)

Dam: THREE WAY BUSINESS SENSE (AI) (ET) (Speckled)

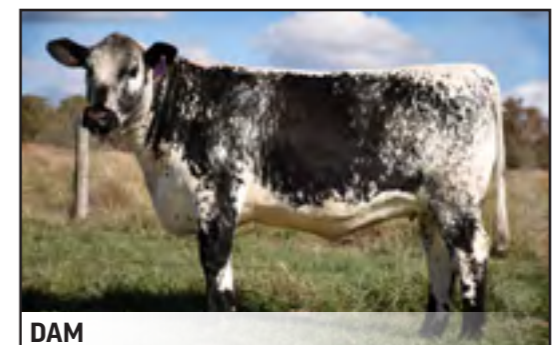
THREE WAY PRINCESS GRACE (AI) (ET) (P) (Leopard)

GENETIC PROFILE

Myostatin	F
Coat	RGF
Poll Status	PCPC
Leptin	C/C

	GL	BW	200	400	600	MCW	Milk	SS	CWT	EMA	Rib	Rump	RBV%	IMF%
EBV														
Accuracy														

The baby heifer in the female offering, she was the last natural daughter of Three Way Business Sense before we lost her to injury. Sired by the new kid on the block Battalion Upper Class Q43, she has everything in her genetics to grow into an impressive future breeder. Unique S54 has quality in her parentage, just look at all the top animals in the sale by her sire or out of her dam.



IDENTIFIER
BAT S54

DOB
16/12/2021

COLOUR
Speckled



TROW Livestock Haulage

For all your livestock, fodder and machinery haulage needs in the New England



0497 627 962



BULL OFFERING

2023 Inaugural Sale



MULTIMIN[®]

WHEN IT MATTERS



IMPROVED FIRST CYCLE CONCEPTION RATE

Multimin Evolution has been shown to improve the first cycle conception rate by **UP TO 19.4%**.¹ Conception in the first cycle can lead to an additional 20 to 40 days for calves to grow.



IMPROVED PREGNANCY RATES

Pregnancy rates in breeding females treated with Multimin Evolution are up to **12% HIGHER** than untreated females, depending on the length of the breeding season and breeding method.^{2,3,4}



IMPROVED SPERM QUALITY

Bulls treated with Multimin Evolution 30 days before joining had **22% HIGHER** sperm concentration and significantly more motile sperm than control animals.^{5,6}

MULTIMIN EVOLUTION has been shown in scientific studies to improve cattle health, fertility, and productivity.

For more information, contact Matt Falconer 0418 684 522

Virbac are proud sponsors of Battalion Speckle Park



BATTALION MONSOON R57

CLICK ON THE LOT PHOTOS TO BE TAKEN TO THE VIDEOS



BUYER _____ PRICE \$ _____

STAR BANK LACERTA 68L (Speckled)

Sire: **WATTLE GROVE MR BUSINESS E11 (ET) (Speckled)**

MOOVIN ZPOTZ SUNSHINE 5S (P) (Speckled)

BATTALION MONSOON R57

JOHNER STOCK FARM UNMARKED 2D (P) (Black)

Dam: **BATTALION HEARTBREAKER P6 (AI) (ET) (P) (Speckled)**

BATTALION HEARTBREAKER M1 (AI) (ET) (P) (White)

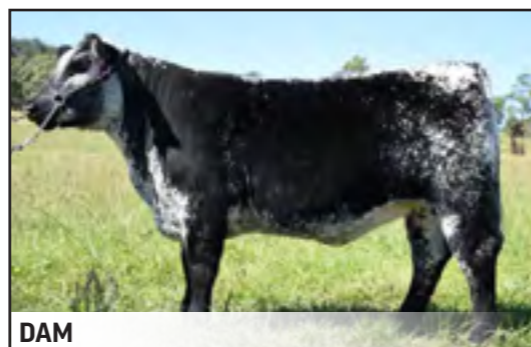
GENETIC PROFILE	
Myostatin	F
Coat	RGF
Poll Status	PCPC
Leptin	C/C

	GL	BW	200	400	600	MCW	Milk	SS	CWT	EMA	Rib	Rump	RBV%	IMF%
EBV	0.7	1.7	14	23	29	29	2	0.3	18	0.7	0.6	0.8	-0.4	0.1
Accuracy	42	57	52	51	51	44	33	42	43	34	40	40	39	37

We kick off the bulls with a big, long Mr Business son out of the ever-consistent Heartbreaker line. Monsoon measured the largest scrotal circumference we have seen in the breed at 46cm in December 2022. We usually find females that have big productive ovaries usually go hand in hand with sons that have larger than average testicle development which is consistent with the genetics behind this bull. His dam Heartbreaker P6 sold at the Scone Sale in 2020 for the sale top price of \$30,000. Full ET brother to lots 2 and 30.



SIRE



DAM

IDENTIFIER
BAT R57

DOB
19/12/2020

COLOUR
Speckled



BATTALION STANDOUT S69



BUYER _____ PRICE \$ _____

STYALS LIGHTNING LADD 14P (P) (Speckled)

Sire: **SPOTS 'N SPROUTS STANDS ALONE (P) (White)**

SPOTS 'N SPROUTS 2R (P) (Speckled)

BATTALION STANDOUT S69

CODIAK CRIKEY GNK 13U (P) (Speckled)

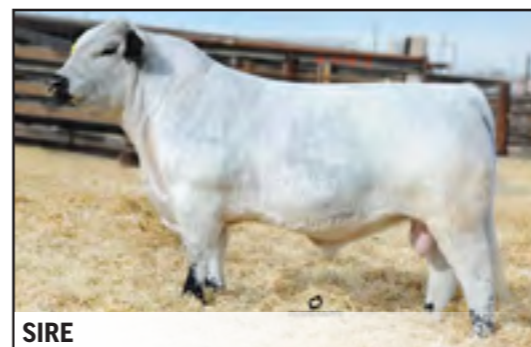
Dam: **WARATAH MELISA G34 (ET) (Speckled)**

CODIAK MELISA RKW 64M (Speckled)

GENETIC PROFILE	
Myostatin	C
Coat	RGF
Poll Status	PCPC
Leptin	C/T

	GL	BW	200	400	600	MCW	Milk	SS	CWT	EMA	Rib	Rump	RBV%	IMF%
EBV	0.2	1.6	16	29	34	37	5	0.9	23	0.4	-0.5	-0.6	0.5	-0.5
Accuracy	56	69	68	71	72	63	56	70	64	55	62	62	60	55

When we started breeding Speckle Park cattle, we decided that the best bull in the breed was Stands Alone 300X, so we made it our goal to build our foundations based around his direct progeny and what a great decision that proved to be. Now Stands Alone semen is extremely hard to come by and subsequently his semen straws have skyrocketed in price, if you can find them at all. Here is an opportunity to secure a direct son of this great sire and set yourself up with breed leading quality. B. Standout S69 has the power and performance we look for in a sire. He ranks in the top 10% of the breed for Scrotal Circumference. Has been used in herd.



SIRE



DAM

IDENTIFIER
BAT S69

DOB
24/01/2021

COLOUR
White



BATTALION SMOKIN' ACES S63



BUYER _____ PRICE \$ _____

SPOTS 'N SPROUTS STANDS ALONE (P) (White)

Sire: **BATTALION STOCKADE (AI) (ET) (P) (Speckled)**

SIX STAR 26T LIGHTNING LADY E204 (ET) (Speckled)

BATTALION SMOKIN' ACES S63

WATTLE GROVE MR BUSINESS E11 (ET) (Speckled)

Dam: **THREE WAY BUSINESS SENSE (AI) (ET) (Speckled)**

THREE WAY PRINCESS GRACE (AI) (ET) (P) (Leopard)

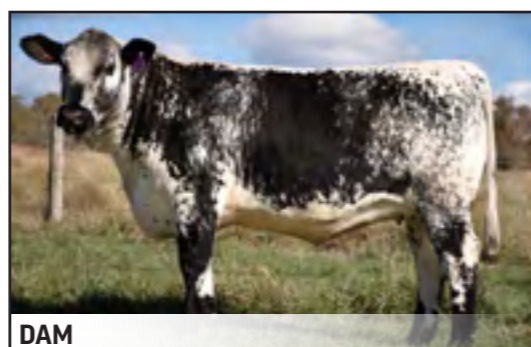
GENETIC PROFILE	
Myostatin	F
Coat	RGF
Poll Status	PCPC
Leptin	T/T

	GL	BW	200	400	600	MCW	Milk	SS	CWT	EMA	Rib	Rump	RBV%	IMF%
EBV	0.5	2.2	17	26	40	40	4	-0.1	23	1.3	-0.5	-0.6	0.6	0
Accuracy	39	52	50	51	51	44	36	46	45	36	42	42	41	39

Smokin' Aces is definitely one of our favourites in this year's bull offering. He fits the mould for our style of cattle, THICK with extra muscle expression along the spine and down into his hind quarters standing on a wide base. He has a naturally quiet temperament which is a trait we also place a high dollar value on. His sire is breeding exceptionally well for us and definitely adds to our expectations of what we think he will produce. We have retained his full sister B. Unique S591 and rate her as one of the best heifers we have bred so far. He is a Full ET brother to lots 24, 27 and 41 and ranks in the top 10% of the breed for EMA. Has been used in herd.



SIRE



DAM

IDENTIFIER
BAT S63

DOB
23/02/2021

COLOUR
Speckled



BATTALION BARRACUDA S67



BUYER _____ PRICE \$ _____

RAVENWORTH INVICTUS 103C (P) (Speckled)

Sire: **WOLF LAKE BOB 24E (AI) (P) (Speckled)**

RAVENWORTH ASPEN 118C (P) (Speckled)

BATTALION BARRACUDA S67

WATTLE GROVE MR BUSINESS E11 (ET) (Speckled)

Dam: **THREE WAY BUSINESS SENSE (AI) (ET) (Speckled)**

THREE WAY PRINCESS GRACE (AI) (ET) (P) (Leopard)

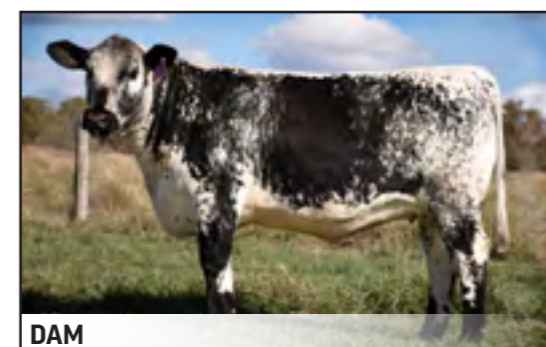
GENETIC PROFILE	
Myostatin	F
Coat	RGF
Poll Status	PCPC
Leptin	T/T

	GL	BW	200	400	600	MCW	Milk	SS	CWT	EMA	Rib	Rump	RBV%	IMF%
EBV	0.6	1.3	13	17	24	29	2	0.1	15	0.7	0.5	0.7	-0.1	0
Accuracy	41	57	54	54	53	44	27	49	45	35	44	44	42	39

Barracuda is a half-brother to B. Smokin' Aces and has often been mistaken for the same bull in the paddock. This bull has a real sires outlook especially when you study his exceptional structure and mobility. He is a taller, later maturing style of bull that has extra length of body and neck extension. Don't let this bull slip through your guard, he has the potential to be as good as any bull in this catalogue.



SIRE



DAM

IDENTIFIER
BAT S67

DOB
01/05/2021

COLOUR
Speckled



BATTALION ZORRO S72



BUYER _____ PRICE \$ _____

UNEEDA ZAPPER 13Z (P) (Speckled)

Sire: CAJA ZEPELIN 1B (P) (Speckled)

NOTTA 60W PHOTO-FINISH 1Z (P) (Speckled)

BATTALION ZORRO S72

Dam: SPOTS 'N SPROUTS STANDS ALONE (P) (White)

BATTALION HEARTBREAKER M1 (AI) (ET) (P) (White)

SIX STAR 13U HEARTBREAKER F13 (AI) (ET) (Speckled)

GENETIC PROFILE	
Myostatin	F
Coat	RGF
Poll Status	PCPC
Leptin	C/C

	GL	BW	200	400	600	MCW	Milk	SS	CWT	EMA	Rib	Rump	RBV%	IMF%
EBV	-0.9	1.2	17	25	39	53	5	0.2	24	0.5	-0.7	-1	0.4	0
Accuracy	46	62	59	59	58	49	37	53	50	40	48	48	47	45

Look at this bull and then look at the pedigree, it's no surprise to see a bull with this extra shape when you cross Caja Zeppelin with Heartbreaker M1. His full ET siblings have all been small at birth then quickly shape up and finish with more muscle expression than their peers. We have used Zorro lightly ourselves over heifers. Zorro is a full ET brother to B. Heartbreaker R13 who sold for \$55,000 to Ivery Downs Speckle Park and B. Heartbreaker S22 who sold for \$40,000 to Victory Cattle Co in 2022. B. Heartbreaker R12 is his full sister that we have retained in heard and is always a crowd favourite to any that visit.



ET Sister: BAT R13 (sold \$55,000)



ET Sister: BAT S22 (sold \$40,000)

IDENTIFIER
BAT S72

DOB
24/04/2021

COLOUR
Speckled



BATTALION STANLEY S64



BUYER _____ PRICE \$ _____

SPOTS 'N SPROUTS STANDS ALONE (P) (White)

Sire: BATTALION STOCKADE (AI) (ET) (P) (Speckled)

SIX STAR 26T LIGHTNING LADY E204 (ET) (Speckled)

BATTALION STANLEY S64

Dam: WATTLE GROVE MR BUSINESS E11 (ET) (Speckled)

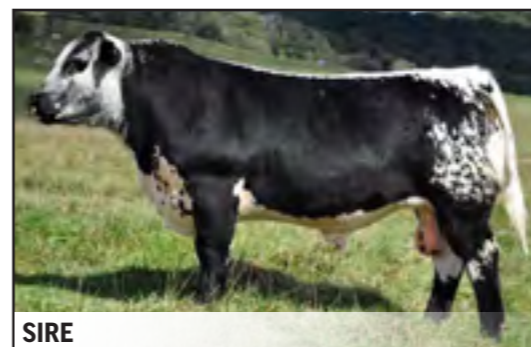
THREE WAY BUSINESS SENSE (AI) (ET) (Speckled)

THREE WAY PRINCESS GRACE (AI) (ET) (P) (Leopard)

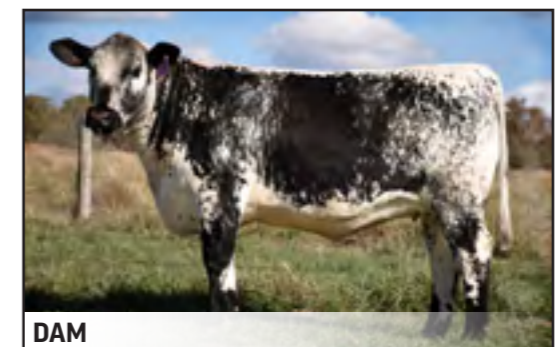
GENETIC PROFILE	
Myostatin	C
Coat	RGF
Poll Status	PCPC
Leptin	T/T

	GL	BW	200	400	600	MCW	Milk	SS	CWT	EMA	Rib	Rump	RBV%	IMF%
EBV	0.5	2.1	16	23	38	41	4	-0.4	22	1.2	-0.3	-0.5	0.5	0
Accuracy	39	57	60	66	66	54	36	67	57	47	54	54	51	44

This is an exceptional B. Stockade M3 son with a very wide top line and tremendous thickness throughout. We rate this bull highly. Stockade really does breed cattle with exceptional carcase merit. The consistency in these full ET brothers, lots 21, 27 and 41 highlight the genetic strength and reliability in this predictable combination. He ranks in the Top 15% for EMA and Retail Beef Yield.



SIRE



DAM

IDENTIFIER
BAT S64

DOB
28/02/2021

COLOUR
Speckled



BATTALION ADMIRAL S61



IDENTIFIER
BAT S61

DOB
25/01/2021

COLOUR
Speckled

BUYER _____ PRICE \$ _____

RIVER HILL 50U ALL IN 60A (White)
 Sire: **UNDERHILL ALL OUT 1D (P) (Speckled)**
 SPOTS 'N SPROUTS 10S (P) (Speckled)

BATTALION ADMIRAL S61

SPOTS 'N SPROUTS STANDS ALONE (P) (White)
 Dam: **BATTALION HEARTBREAKER M1 (AI) (ET) (P) (White)**
 SIX STAR 13U HEARTBREAKER F13 (AI) (ET) (Speckled)

		GENETIC PROFILE													
Myostatin	C														
Coat	RGF														
Poll Status	PCPC														
Leptin	C/C														

	GL	BW	200	400	600	MCW	Milk	SS	CWT	EMA	Rib	Rump	RBV%	IMF%
EBV	0.3	2.2	15	28	42	45	3	0.5	26	1.6	-1.3	-1.8	1.6	-0.8
Accuracy	45	65	64	69	69	57	33	68	59	47	56	56	54	47

If you want to breed vealers that will stand out in the saleyards with their extra thickness and strong toplines this is the bull that will breed a marketable advantage. Full brother to B. Heartbreaker R16 who sold for the current WORLD RECORD price of \$100,000 to Ivery Downs Speckle Park and B. Heartbreaker S24 sold for \$28,000 to Sandra Jane Speckle Park in 2022 plus Full brother to lots 3, 31 and 32. He ranks in the top 1% of the breed for Retail Beef Yield and Top 5% for EMA.



ET Sister: BAT R16 (sold \$100,000)



DAM



BATTALION UNDERDOG S73



BUYER _____ PRICE \$ _____

JOHNER STOCK FARM UNMARKED 2D (P) (Black)
 Sire: **BATTALION UTAH (ET) (Speckled)**
 BATTALION HEARTBREAKER M1 (AI) (ET) (P) (White)

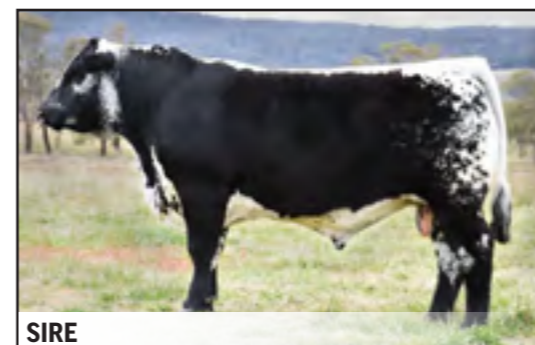
BATTALION UNDERDOG S73

CODIAK SO LONG GEORGE GNK 6Z (P) (White)
 Dam: **BATTALION KARA P4 (AI) (ET) (P) (Speckled)**
 SIX STAR 68L KARA D8 (ET) (Black)

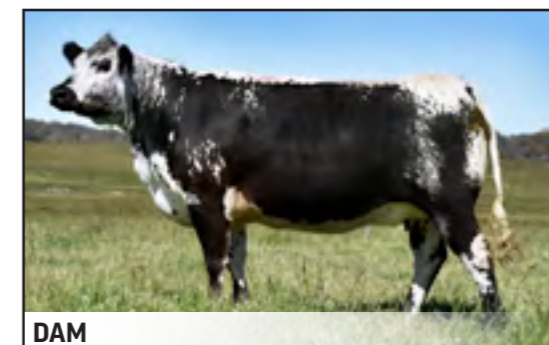
		GENETIC PROFILE													
Myostatin	F														
Coat	RGF														
Poll Status	PCPC														
Leptin	C/C														

	GL	BW	200	400	600	MCW	Milk	SS	CWT	EMA	Rib	Rump	RBV%	IMF%
EBV	0.6	1.6	13	21	26	25	3	0.8	15	0.4	0.3	0.3	-0.3	0.1
Accuracy	38	49	46	45	45	38	32	41	39	32	38	38	37	35

Underdog is the bull in the catalogue that continues to get better and better. We really like the direction this bull is heading, a quiet achiever that would be among the top bulls on potential in this draft. He is a deep sided bull with an excellent natural elevated head carriage who has also been used lightly over heifers in our heard due to his smooth shoulders and low birth weight pedigree. He is a Full ET brother to lots 15 and 28. He ranks in the top 10% for Scrotal Circumference.



SIRE



DAM

IDENTIFIER
BAT S73

DOB
06/05/2021

COLOUR
Leopard



BATTALION SHAKEDOWN S65

BATTALION UNIT S68



BUYER _____ PRICE \$ _____

BUYER _____ PRICE \$ _____

SPOTS 'N SPROUTS STANDS ALONE (P) (White)

Sire: **BATTALION STOCKADE (AI) (ET) (P) (Speckled)**

SIX STAR 26T LIGHTNING LADY E204 (ET) (Speckled)

BATTALION SHAKEDOWN S65

WATTLE GROVE MR BUSINESS E11 (ET) (Speckled)

Dam: **THREE WAY BUSINESS SENSE (AI) (ET) (Speckled)**

THREE WAY PRINCESS GRACE (AI) (ET) (P) (Leopard)

GENETIC PROFILE

Myostatin	F
Coat	RGF
Poll Status	PCPC
Leptin	T/T

	GL	BW	200	400	600	MCW	Milk	SS	CWT	EMA	Rib	Rump	RBV%	IMF%
EBV	0.5	1.9	15	23	37	38	4	0.1	20	1.1	0	0	0	0.3
Accuracy	39	57	60	66	66	54	36	67	57	47	54	54	51	44

Shakedown measured the highest IMF in his contemporary group in December 2022, measuring 7.5% whilst still under 10mm of body fat on the rib and rump. There has been a big push in the industry to raise IMF to improve MSA grading. He is T/T for leptin and has the attributes of a real carcass improver for the commercial producer looking to improve their product. Another bull with consistent quality in his genetics, Full ET brother to lots 21, 24 and 41. He ranks in the top 15% for EMA.

JOHNER STOCK FARM UNMARKED 2D (P) (Black)

Sire: **BATTALION UTAH (ET) (Speckled)**

BATTALION HEARTBREAKER M1 (AI) (ET) (P) (White)

BATTALION UNIT S68

CODIAK SO LONG GEORGE GNK 6Z (P) (White)

Dam: **BATTALION KARA P4 (AI) (ET) (P) (Speckled)**

SIX STAR 68L KARA D8 (ET) (Black)

GENETIC PROFILE

Myostatin	C
Coat	RGF
Poll Status	PCPC
Leptin	C/C

	GL	BW	200	400	600	MCW	Milk	SS	CWT	EMA	Rib	Rump	RBV%	IMF%
EBV	0.6	1.6	13	21	26	25	3	0.8	15	0.4	0.3	0.3	-0.3	0.1
Accuracy	38	49	46	45	45	38	32	41	39	32	38	38	37	35

Unit is a moderate framed meat machine, an outright low birthweight vealer producer. Soft and easy doing, a great bull for low inputs and high returns. Earlier maturing sire with positive fats and ample muscle expression. Full ET brother to lots 15 and 26. He ranks in the top 10% for Scrotal Circumference.

IDENTIFIER
BAT S65

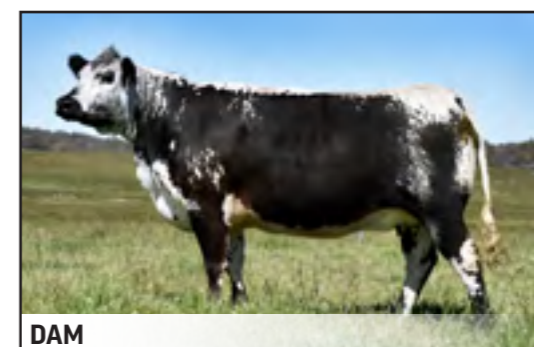
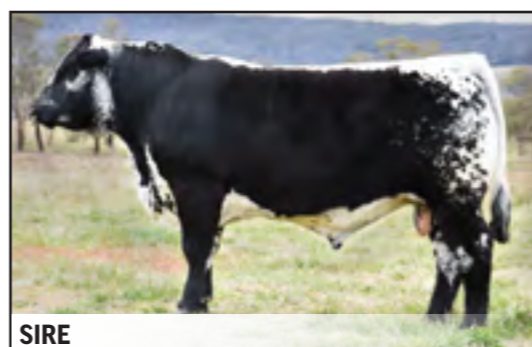
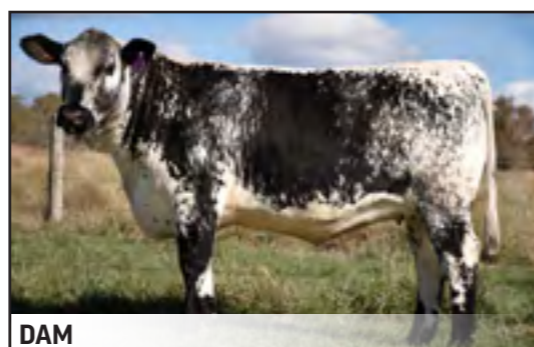
DOB
06/03/2021

COLOUR
Speckled

IDENTIFIER
BAT S68

DOB
06/05/2021

COLOUR
Leopard



BATTALION SHERIFF R55



BUYER _____ PRICE \$ _____

REMIN'S SPECIAL 1L (Speckled)

Sire: **PETEMAR SPECIAL EDITION 2D (P) (Speckled)**

MISS SAGE 2N (Speckled)

BATTALION SHERIFF R55

RIVER HILL 26T WALKER 60W (P) (Speckled)

Dam: **THREE WAY GRACELANDS (AI) (ET) (P) (Speckled)**

CODIAK UNIQUE GNK 8R (P) (Speckled)

GENETIC PROFILE	
Myostatin	F
Coat	RGC
Poll Status	PCPC
Leptin	T/T

	GL	BW	200	400	600	MCW	Milk	SS	CWT	EMA	Rib	Rump	RBV%	IMF%
EBV	-0.1	1.4	14	23	34	33	2	0.1	18	-0.1	-0.5	-0.7	-0.2	0.2
Accuracy	49	72	65	66	66	55	36	60	57	44	52	52	50	43

Quality black animals are an integral part of the breed. Sheriff is a sire we would not hesitate to keep for ourselves if we needed another sire. We have hand served him to several of our own females and used him in flushes. He has a bit of extra frame with an even muscle pattern and smooth shoulder. His Dam Three Way Gracelands G19 was arguably the most consistent breeding female in the Three Way Speckle Park herd.



SIRE



DAM

IDENTIFIER
BAT R55

DOB
16/12/2020

COLOUR
Black



BATTALION MUFASA R56



BUYER _____ PRICE \$ _____

STAR BANK LACERTA 68L (Speckled)

Sire: **WATTLE GROVE MR BUSINESS E11 (ET) (Speckled)**

MOOVIN ZPOTZ SUNSHINE 5S (P) (Speckled)

BATTALION MUFASA R56

JOHNER STOCK FARM UNMARKED 2D (P) (Black)

Dam: **BATTALION HEARTBREAKER P6 (AI) (ET) (P) (Speckled)**

BATTALION HEARTBREAKER M1 (AI) (ET) (P) (White)

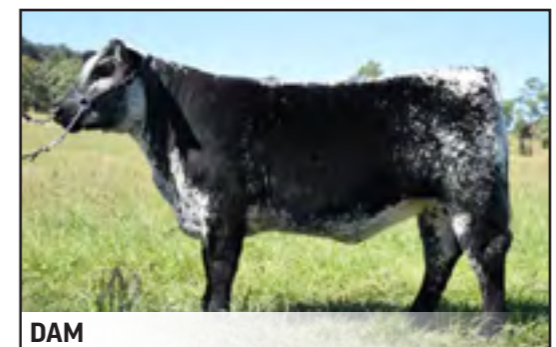
GENETIC PROFILE	
Myostatin	F
Coat	RGF
Poll Status	PCPC
Leptin	C/C

	GL	BW	200	400	600	MCW	Milk	SS	CWT	EMA	Rib	Rump	RBV%	IMF%
EBV	0.6	1.4	13	23	28	27	2	0.3	19	0.9	0.6	0.8	-0.3	0.1
Accuracy	45	68	61	62	63	52	33	59	52	42	49	49	47	41

Mufasa is a Full brother to B. Monsoon and is very much in the same league, again having a bit of extra capacity and scrotal development (40cm). He is also a full ET brother to lots 2 and 19, you can see a consistent line and quality in all three siblings in this sale.



SIRE



DAM

IDENTIFIER
BAT R56

DOB
17/12/2020

COLOUR
Speckled



BATTALION AIR EXPRESS S59



BATTALION ALASKA S58



IDENTIFIER
BAT S59

DOB
25/01/2021

COLOUR
Speckled

BUYER _____ PRICE \$ _____

RIVER HILL 50U ALL IN 60A (White)
 Sire: **UNDERHILL ALL OUT 1D (P) (Speckled)**
 SPOTS 'N SPROUTS 10S (P) (Speckled)

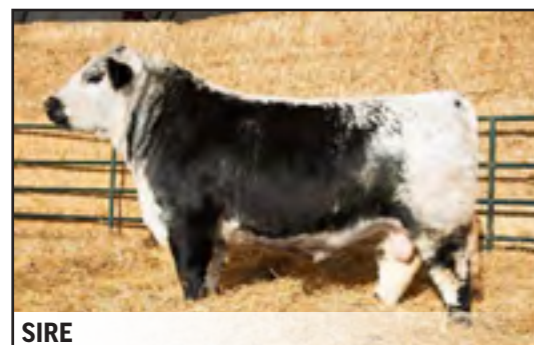
BATTALION AIR EXPRESS S59

SPOTS 'N SPROUTS STANDS ALONE (P) (White)
 Dam: **BATTALION HEARTBREAKER M1 (AI) (ET) (P) (White)**
 SIX STAR 13U HEARTBREAKER F13 (AI) (ET) (Speckled)

GENETIC PROFILE	
Myostatin	F
Coat	RGF
Poll Status	PCPC
Leptin	C/C

	GL	BW	200	400	600	MCW	Milk	SS	CWT	EMA	Rib	Rump	RBV%	IMF%
EBV	0.3	2.4	17	29	43	49	3	0.5	26	1	-0.8	-1.1	1	-0.5
Accuracy	45	65	64	69	69	57	33	68	59	47	56	56	54	47

Air Express would be one of the larger framed Speckle Park bulls we have bred. He is bred in the purple being out of the great Heartbreaker M1. Full ET siblings to B. Heartbreaker R16 who sold for the current WORLD RECORD price of \$100,000 to Ivery Downs Speckle Park and B. Heartbreaker S24 who sold for \$28,000 to Sandra Jane Speckle Park in 2022, plus Full ET brother to lots 3, 25 and 32. He is in the top 5% for Retail Beef Yield and top 15% for 600 Day, Carcase Weight and EMA.



SIRE



DAM



BUYER _____ PRICE \$ _____

RIVER HILL 50U ALL IN 60A (White)
 Sire: **UNDERHILL ALL OUT 1D (P) (Speckled)**
 SPOTS 'N SPROUTS 10S (P) (Speckled)

BATTALION ALASKA S58

SPOTS 'N SPROUTS STANDS ALONE (P) (White)
 Dam: **BATTALION HEARTBREAKER M1 (AI) (ET) (P) (White)**
 SIX STAR 13U HEARTBREAKER F13 (AI) (ET) (Speckled)

GENETIC PROFILE	
Myostatin	F
Coat	RGF
Poll Status	PCPC
Leptin	C/C

	GL	BW	200	400	600	MCW	Milk	SS	CWT	EMA	Rib	Rump	RBV%	IMF%
EBV	0.4	1.6	12	22	33	39	3	0.3	19	0.9	0	0	0.4	-0.4
Accuracy	45	65	64	69	69	57	33	68	59	47	56	56	54	47

Another good Heartbreaker M1 son with exceptional length. The M1 cross All Out combination is producing predominantly larger framed types than some other M1 combinations. Full ET sibling to B. Heartbreaker R16 who sold for the WORLD RECORD price of \$100,000 to Ivery Downs Speckle Park and B. Heartbreaker S24 sold for \$28,000 to Sandra Jane Speckle Park in 2022 plus Full ET brother to lots 3, 25 and 31.



ET Sister: BAT R16 (sold \$100,000)



DAM

IDENTIFIER
BAT S58

DOB
24/01/2021

COLOUR
Speckled



BATTALION LOCKED N LOADED S79



BUYER _____ PRICE \$ _____

RIVER HILL 26T WALKER 60W (P) (Speckled)

Sire: RIVER HILL 60W LINE DRIVE 54Z (AI) (Leopard)

NOTTA PHO-FINISH 54P (Speckled)

BATTALION LOCKED N LOADED S79

SPOTS 'N SPROUTS STANDS ALONE (P) (White)

Dam: MT ECCLES QUEEN ALONE (AI) (ET) (Speckled)

WARATAH E25 (ET) (P) (Black)

GENETIC PROFILE

Myostatin	F
Coat	RGF
Poll Status	PCPC
Leptin	C/T

	GL	BW	200	400	600	MCW	Milk	SS	CWT	EMA	Rib	Rump	RBV%	IMF%
EBV	0.3	2.5	24	42	56	66	8	0.8	35	0.3	-0.5	-0.7	0	0.4
Accuracy	53	69	73	72	69	58	50	74	63	54	61	61	59	54

The first of the younger 19 month old bulls. Every now and then you need to add a bit of grunt to your sire arsenal. Locked N Loaded excites us with his exceptional power and performance. He is a big free moving young sire with just a little bit more of everything. A standout in his group since birth and never looked like slowing down. We have high expectations for the role this bull could play in anyone's herd. Full ET brother to lots 6, 13, 17 and 35. He Ranks in the top 1% of the breed for Milk, Carcase Weight, and Mature Cow Weight, top 5% for 400 and 600 day, top 10% for 200 day and scanned 7.3% for IMF in December 2022.



ET Brother: Battalion Longbow



DAM

IDENTIFIER
BAT S79

DOB
04/09/2021

COLOUR
Speckled



BATTALION LONGREACH S77



BUYER _____ PRICE \$ _____

SIX STAR 82U ROYAL FLESH 101Y (AI) (ET) (P) (Speckled)

Sire: PREMIER 101Y LOGIC L11 (AI) (ET) (Leopard)

SPKNZ H2 (P) (White)

BATTALION LONGREACH S77

SPOTS 'N SPROUTS STANDS ALONE (P) (White)

Dam: BATTALION GRACELANDS P3 (AI) (ET) (P) (White)

THREE WAY GRACELANDS (AI) (ET) (P) (Speckled)

GENETIC PROFILE

Myostatin	F
Coat	RGF
Poll Status	PCPC
Leptin	C/T

	GL	BW	200	400	600	MCW	Milk	SS	CWT	EMA	Rib	Rump	RBV%	IMF%
EBV	-0.6	3	25	43	56	57	4	-0.1	36	1.8	-0.8	-1.1	1.1	-0.3
Accuracy	48	61	59	59	57	49	43	53	51	43	50	50	48	47

A top prospect here! Long and strong with the potential to be something just a bit special. If you want to increase the size of your speckle herd this bull is hard to fault. His dam produced Gracelands R17 selling for \$32,000 to Toebelle Speckle Park in 2022. She is also the dam of one of our best heifers Gracelands S28 retained in herd this year. Longreach has some very impressive EBV's ranking in the Top 1% of the breed for Carcase Weight, Top 5% for 200, 400, 600 day, EMA and Retail Beef Yield, Top 20% for Gestation Length. Full ET brother to lots 12 and 36.



SIRE



DAM

IDENTIFIER
BAT S77

DOB
31/08/2021

COLOUR
White



BATTALION LITTLE JOHN S74



BUYER _____ PRICE \$ _____

RIVER HILL 26T WALKER 60W (P) (Speckled)

Sire: RIVER HILL 60W LINE DRIVE 54Z (AI) (Leopard)

NOTTA PHO-FINISH 54P (Speckled)

BATTALION LITTLE JOHN S74

SPOTS 'N SPROUTS STANDS ALONE (P) (White)

Dam: MT ECCLES QUEEN ALONE (AI) (ET) (Speckled)

WARATAH E25 (ET) (P) (Black)

GENETIC PROFILE

Myostatin	F
Coat	RGF
Poll Status	PCPC
Leptin	C/T

	GL	BW	200	400	600	MCW	Milk	SS	CWT	EMA	Rib	Rump	RBV%	IMF%
EBV	0.3	2.4	23	39	52	60	8	0.5	32	-0.1	-1.1	-1.5	0.2	0.3
Accuracy	53	69	73	72	69	58	50	74	63	54	61	61	59	54

Named after Robin Hood's sidekick, "Little John" is anything but little. He is growing and maturing into a big upstanding young sire. Little John S74 ranks in the top 1% for Milk Top 5% for 400 and 600 day and top 10% for 200 days. He is a Full ET brother to lots 6, 13, 17, 33 and our next resident super star B. Longbow S78.



SIRE



DAM

IDENTIFIER
BAT S74

DOB
29/08/2021

COLOUR
Speckled



BATTALION LABYRYINTH S76



BUYER _____ PRICE \$ _____

SIX STAR 82U ROYAL FLESH 101Y (AI) (ET) (P) (Speckled)

Sire: PREMIER 101Y LOGIC L11 (AI) (ET) (Leopard)

SPKNZ H2 (P) (White)

BATTALION LABYRYINTH S76

SPOTS 'N SPROUTS STANDS ALONE (P) (White)

Dam: BATTALION GRACELANDS P3 (AI) (ET) (P) (White)

THREE WAY GRACELANDS (AI) (ET) (P) (Speckled)

GENETIC PROFILE

Myostatin	C
Coat	RGF
Poll Status	PCPC
Leptin	C/T

	GL	BW	200	400	600	MCW	Milk	SS	CWT	EMA	Rib	Rump	RBV%	IMF%
EBV	-0.6	3.2	26	44	58	56	4	-0.6	40	2.8	-1.3	-1.8	2.1	-0.7
Accuracy	48	65	70	69	65	53	43	71	60	51	58	58	56	51

Labyrinth is another of the bulls in this catalogue suited for the breeder looking to keep larger framed cattle. He measured a raw EMA in December of 117sq cm which was larger at the time of bulls more than 4 months older. Labyrinth now ranks in the Top 1% of the breed for EMA, Carcase Weight and Retail Beef Yield, Top 5% for 200, 400 and 600 day, top 20% for Gestation Length. His dam produced Gracelands R17 selling for \$32,000 to Toebelle Speckle Park in 2022. She is also the dam of one of our best heifers B. Gracelands S28 retained in herd this year. Full ET brother to lots 12 and 34.



SIRE



DAM

IDENTIFIER
BAT S76

DOB
31/08/2021

COLOUR
Leopard



BATTALION UNDERCOVER S82



BUYER _____ PRICE \$ _____

HS UNTAPPED 3A (Speckled)

Sire: **JOHNER STOCK FARM UNMARKED 2D (P) (Black)**

JENCREST YAVONNA 6Y (P) (Speckled)

BATTALION UNDERCOVER S82

SPOTS 'N SPROUTS STANDS ALONE (P) (White)

Dam: **BATTALION HEARTBREAKER M1 (AI) (ET) (P) (White)**

SIX STAR 13U HEARTBREAKER F13 (AI) (ET) (Speckled)

GENETIC PROFILE	
Myostatin	F
Coat	RGF
Poll Status	PCPC
Leptin	C/C

	GL	BW	200	400	600	MCW	Milk	SS	CWT	EMA	Rib	Rump	RBV%	IMF%
EBV	1	1.4	15	22	29	33	1	0.7	18	0	0.5	0.6	-0.6	0.2
Accuracy	50	67	71	70	66	54	37	72	61	52	59	59	57	52

This genetic combination always produces animals with extra width and depth plus very quiet temperaments. S82 has always been one of the naturally quiet animals in his group. Full brother to some of our most well-known animals. B. Heartbreaker P6 sold to Baw Baw Speckle Park for \$30,000, B. Utah Q44 sold to Celamba Speckle Park for \$45,000, B. Upper Class Q43 sold to Ivery Downs Speckle Park for \$20,000, and two animals in this sale lots 8 and 39.



ET Brother: BAT Q43 (\$20,000)



DAM

IDENTIFIER
BAT S82

DOB
06/09/2021

COLOUR
Speckled



BATTALION FLORIDA S81



BUYER _____ PRICE \$ _____

RIVER HILL BACKGROUNDER 025B (Speckled)

Sire: **UNLIMITEDSPOTS GRNWD FUTURE20F (Speckled)**

BLACKIE RAINA OF P.A.R. 21Z (Black)

BATTALION FLORIDA S81

SPOTS 'N SPROUTS STANDS ALONE (P) (White)

Dam: **BATTALION HEARTBREAKER M1 (AI) (ET) (P) (White)**

SIX STAR 13U HEARTBREAKER F13 (AI) (ET) (Speckled)

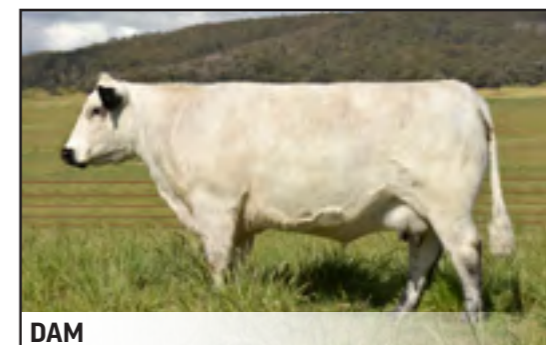
GENETIC PROFILE	
Myostatin	F
Coat	RGF
Poll Status	PCPC
Leptin	C/C

	GL	BW	200	400	600	MCW	Milk	SS	CWT	EMA	Rib	Rump	RBV%	IMF%
EBV	-0.1	1.4	16	23	30	33	4	-0.2	19	0.2	-0.3	-0.4	0	0.2
Accuracy	36	63	66	65	60	45	30	68	54	44	52	52	49	42

The first Greenwood Future bull out of Heartbreaker M1 to be offered. Future was used for his impeccable structure and fluid mobility. Add Heartbreaker M1's thickness and capacity and the results speak for themselves. We think this bull has loads of potential and demands attention, you can shop with confidence here. Full ET brother to lot 9.



SIRE



DAM

IDENTIFIER
BAT S81

DOB
06/09/2021

COLOUR
Speckled



BATTALION UNION S80



BUYER _____ PRICE \$ _____

HS UNTAPPED 3A (Speckled)

Sire: **JOHNER STOCK FARM UNMARKED 2D (P) (Black)**

JENCREST YAVONNA 6Y (P) (Speckled)

BATTALION UNION S80

SPOTS 'N SPROUTS STANDS ALONE (P) (White)

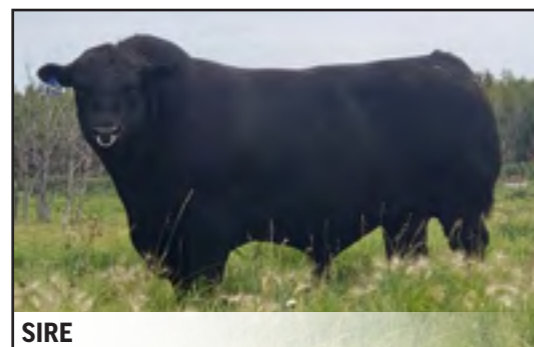
Dam: **BATTALION HEARTBREAKER M1 (AI) (ET) (P) (White)**

SIX STAR 13U HEARTBREAKER F13 (AI) (ET) (Speckled)

GENETIC PROFILE	
Myostatin	F
Coat	RGF
Poll Status	PCPC
Leptin	C/C

	GL	BW	200	400	600	MCW	Milk	SS	CWT	EMA	Rib	Rump	RBV%	IMF%
EBV	1	1.1	13	20	26	29	1	0.3	17	0.1	0.4	0.5	-0.5	0.2
Accuracy	50	67	71	70	66	54	37	72	61	52	59	59	57	52

An exciting young sire prospect with a pedigree of proven success. An opportunity to secure a full brother to some of our most well-known animals. B. Heartbreaker P6 sold to Baw Baw Speckle Park for \$30,000, B. Utah Q44 sold to Celamba Speckle Park for \$45,000, B. Upper Class Q43 sold to Ivery Downs Speckle Park for \$20,000, and two animals in this sale lots 8 and 37.



SIRE



DAM

IDENTIFIER
BAT S80

DOB
05/09/2021

COLOUR
Speckled



BATTALION SCOUT S83



BUYER _____ PRICE \$ _____

CODIAK OSCAR GNK 8S (P) (Leopard)

Sire: **CODIAK SPENCER GNK 52B (P) (Leopard)**

CODIAK WILLA GNK 13W (P) (Speckled)

BATTALION SCOUT S83

WATTLE GROVE MR BUSINESS E11 (ET) (Speckled)

Dam: **THREE WAY BUSINESS SENSE (AI) (ET) (Speckled)**

THREE WAY PRINCESS GRACE (AI) (ET) (P) (Leopard)

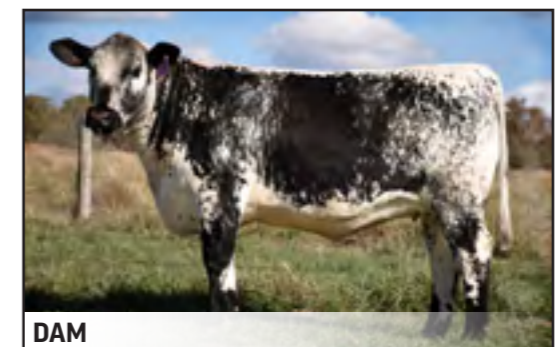
GENETIC PROFILE	
Myostatin	F
Coat	RGF
Poll Status	PCPC
Leptin	C/T

	GL	BW	200	400	600	MCW	Milk	SS	CWT	EMA	Rib	Rump	RBV%	IMF%
EBV	0.5	1.9	12	18	28	27	1	-0.2	17	1.3	-1	-1.4	1.5	-0.8
Accuracy	45	63	69	69	65	53	38	71	59	50	57	57	55	49

The only Codiak Spencer bull on offer in the sale and a full ET brother to one of our favourite heifers in the sale Battalion Unique S50 (lot 7). Out of Three Way Business Sense who is well represented in this catalogue being the dam of many of the top animals on offer. Top 1% of the breed for Retail Beef Yield and top 10% for EMA.



SIRE



DAM

IDENTIFIER
BAT S83

DOB
07/09/2021

COLOUR
Speckled



BATTALION SLICK S66



BUYER _____ PRICE \$ _____

SPOTS 'N SPROUTS STANDS ALONE (P) (White)

Sire: **BATTALION STOCKADE (AI) (ET) (P) (Speckled)**

SIX STAR 26T LIGHTNING LADY E204 (ET) (Speckled)

BATTALION SLICK S66

WATTLE GROVE MR BUSINESS E11 (ET) (Speckled)

Dam: **THREE WAY BUSINESS SENSE (AI) (ET) (Speckled)**

THREE WAY PRINCESS GRACE (AI) (ET) (P) (Leopard)

GENETIC PROFILE

Myostatin **F**

Coat **RGF**

Poll Status **PCPC**

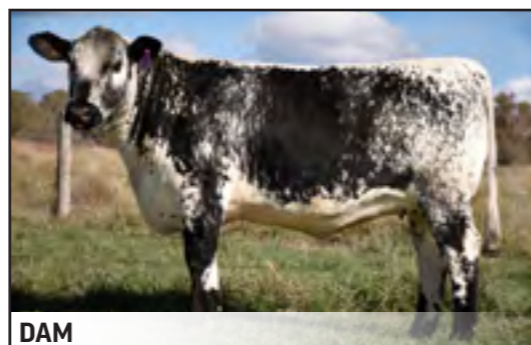
Leptin **C/T**

	GL	BW	200	400	600	MCW	Milk	SS	CWT	EMA	Rib	Rump	RBV%	IMF%
EBV	0.5	2.2	16	24	39	39	4	-0.6	24	1.8	-0.7	-0.9	1	-0.1
Accuracy	39	57	60	66	66	54	36	67	57	47	54	54	51	44

Another long-bodied Stockade with the trademark strong top line. His dam was purchased as a heifer for her overall volume and doability. She was very quiet and had a nice square udder with small teats. He ranks in the top 5% for EMA and the top 20% for carcass weight. Full ET brother to lots 21, 24 and 27.



SIRE



DAM

IDENTIFIER
BAT S66

DOB
07/03/2021

COLOUR
Black



BATTALION MEAT PACKER XB1



BUYER _____ PRICE \$ _____

JSF TRADE SECRET (100% Speckle Park)

Sire: **XB TRADE**

G45 (50% Simmental/50% Maine-Anjou)

BATTALION MEAT PACKER XB1

SIMO (100% Simmental)

Dam: **G93**

G59 (100% Maine-Anjou)

Battalion Meat Packer XB1 is a strategically bred composite bull. We are firm believers in the hybrid vigour waiting to be unlocked when crossing with Speckle Park cattle. We intentionally breed a couple composite bulls each year to be used as backup sires over our recipient herd. We love the Speckle Park/Simmental cross and have taken it one step further by adding a splash of Maine-Anjou. The line of Maine-Anjou we have been using adds milk, frame, and overall capacity. We like our recipient females to be strong for maternal traits with extra frame and capacity, this three way combination breed great females and the male portion make exceptionally heavy carcass vealers, great for show steers. XB1 is very thick whilst still having a very smooth shoulder.



GRAND SIRE



43.

BATTALION COW KING XB2



BUYER _____ PRICE \$ _____

JSF TRADE SECRET (100% Speckle Park)

Sire: **XB TRADE**

G45 (50% Simmental/50% Maine-Anjou)

BATTALION COW KING XB2

SIMO (100% Simmental)

Dam: **G93**

G59 (100% Maine-Anjou)

Battalion Cow King XB2 is another of our Speckle Park/Simmental/ Maine-Anjou composite bulls. It is obvious to see to cross-breeding advantage with other breeds and the hybrid vigour. He is a later maturing larger frame bull ideal for breeding larger cows with easy calving ability or bigger heavy weight bullocks. What we really like about this bull is his emense growth and size whilst maintaining calving ease with his beautiful smooth shoulder and length.



GRAND SIRE



EMBRYO & SEMEN OFFERING

2023 Inaugural Sale



2x EMBRYOS

BATTALION HEARTBREAKER BAT M1 x GREENWOOD COAL TRAIN DJP 84J



BUYER _____

PRICE \$ _____

STYALS LIGHTNING LADD 14P (P) (Speckled)
 Sire: **SPOTS 'N SPROUTS STANDS ALONE (P) (White)**
 SPOTS 'N SPROUTS 2R (P) (Speckled)
BATTALION HEARTBREAKER M1
 CODIAK CRIKEY GNK 13U (P) (Speckled)
 Dam: **SIX STAR 13U HEARTBREAKER F13 (AI) (ET) (Speckled)**
 PRAIRIE HILL HEARTBREAKER 99L (White)

RIVER HILL 50U ALL IN 60A (White)
 Sire: **UNDERHILL ALL OUT 1D (P) (Speckled)**
 SPOTS 'N SPROUTS 10S (P) (Speckled)
GREENWOOD COAL TRAIN 84J
 RAVENWORTH INVICTUS 103C (P) (Speckled)
 Dam: **RAVENWORTH WILLOW 135E (P) (Speckled)**
 RAVENWORTH WILLOW 104B (P) (Black)

M1 x All Out produced progeny to \$100,000. This joining to Coal Train (an All Out son) is the most exciting joining yet. This will be the one and only offering of this combination! Heartbreaker M1's 7 live daughters sold at auction have AVERAGED \$46,714, a record hard to beat in any breed.

3x EMBRYOS

BATTALION HEARTBREAKER BAT R20 x NOTTA HAWKEYE JMG 444E



BUYER _____

PRICE \$ _____

RIVER HILL 50U ALL IN 60A (White)
 Sire: **UNDERHILL ALL OUT 1D (P) (Speckled)**
 SPOTS 'N SPROUTS 10S (P) (Speckled)
BATTALION HEARTBREAKER R20
 SPOTS 'N SPROUTS STANDS ALONE (P) (White)
 Dam: **BATTALION HEARTBREAKER M1 (AI) (ET) (P) (White)**
 SIX STAR 13U HEARTBREAKER F13 (AI) (ET) (Speckled)

UNEEDA ZAPPER 13Z (P) (Speckled)
 Sire: **CAJA ZEPPELIN 1B (P) (Speckled)**
 NOTTA 60W PHOTO-FINISH 1Z (P) (Speckled)
NOTTA 1B HAWKEYE 444E
 PRAIRIE HILL JOHN WAYNE 50S (P) (Speckled)
 Dam: **NOTTA 50S JANETTE 5W (P) (Speckled)**
 NOTTA PRETENDER 64P (ET) (Speckled)

Take the time to study the strength you will have in this pedigree. Heartbreaker R20 is a full ET sister to the FEMALE WORLD RECORD \$100,000 B. Heartbreaker R16. Hawkeye is a 2-time CHAMPION OF THE WORLD and sired the MALE WORLD RECORD \$100,000 Sixstar Justice R10.

2x EMBRYOS

BATTALION HEARTBREAKER BAT M1 x CALICO CREEK BUTANE LS 8B



BUYER _____

PRICE \$ _____

STYALS LIGHTNING LADD 14P (P) (Speckled)
 Sire: **SPOTS 'N SPROUTS STANDS ALONE (P) (White)**
 SPOTS 'N SPROUTS 2R (P) (Speckled)
BATTALION HEARTBREAKER M1
 CODIAK CRIKEY GNK 13U (P) (Speckled)
 Dam: **SIX STAR 13U HEARTBREAKER F13 (AI) (ET) (Speckled)**
 PRAIRIE HILL HEARTBREAKER 99L (White)

P.A.R. PAPA RAZZI 6P (Speckled)
 Sire: **P.A.R. THROTTLE 66T (P) (Speckled)**
 ROB 'N SON'S FARMS 6P (Speckled)
CALICO CREEK BUTANE 8B
 P.A.R. KING PIN 1K (Speckled)
 Dam: **PETULA OF P.A.R. 61P (Speckled)**
 LUCKY STRIKE OF P.A.R. 6K (Speckled)

With Heartbreaker M1 now deceased these embryos will be some of her last to be offered. Butane was strategically selected for this flush for one of the final chances for a Heartbreaker outcross. Heartbreaker M1's combined entire male and female progeny have sold for an AVERAGE of \$31,964! If you are looking for quality embryos with the security of top dollar potential return, these are as safe as they come.

2x EMBRYOS

BATTALION HEARTBREAKER BAT R20 x SIXSTAR SOUTHERN AURORA JUSTICE J10



BUYER _____

PRICE \$ _____

RIVER HILL 50U ALL IN 60A (White)
 Sire: **UNDERHILL ALL OUT 1D (P) (Speckled)**
 SPOTS 'N SPROUTS 10S (P) (Speckled)
BATTALION HEARTBREAKER R20
 SPOTS 'N SPROUTS STANDS ALONE (P) (White)
 Dam: **BATTALION HEARTBREAKER M1 (AI) (ET) (P) (White)**
 SIX STAR 13U HEARTBREAKER F13 (AI) (ET) (Speckled)

CAJA ZEPPELIN 1B (P) (Speckled)
 Sire: **NOTTA 1B HAWKEYE 444E (AI) (Speckled)**
 NOTTA 50S JANETTE 5W (P) (Speckled)
SIX STAR SOUTHERN AURORA 'JUSTICE' R10 (AI) (ET) (Speckled)
 SPOTS 'N SPROUTS STANDS ALONE (P) (White)
 Dam: **SIX STAR 300X UNIQUE K22 (AI) (ET) (Speckled)**
 CODIAK UNIQUE GNK 8R (P) (Speckled)

We place the highest importance on stacking pedigrees with consistent lines and styles. R20's Dam was our most consistent breeder and a legend of the breed. Justice R10 is the first bull to be judged champion of the world that is also sired by a 2-time champion of the world. Forget the judging if you like and look at the proven sales results in this pedigree. M1, one of, if not the most potent high dollar breeding female in the breed and Justice R10 the \$100,000 World Record sire.

4x EMBRYOS

BATTALION HEARTBREAKER BAT R20 x CALICO CREEK BUTANE LS 8B



BUYER _____

PRICE \$ _____

RIVER HILL 50U ALL IN 60A (White)
 Sire: **UNDERHILL ALL OUT 1D (P) (Speckled)**
 SPOTS 'N SPROUTS 10S (P) (Speckled)
BATTALION HEARTBREAKER R20
 SPOTS 'N SPROUTS STANDS ALONE (P) (White)
 Dam: **BATTALION HEARTBREAKER M1 (AI) (ET) (P) (White)**
 SIX STAR 13U HEARTBREAKER F13 (AI) (ET) (Speckled)

P.A.R. PAPA RAZZI 6P (Speckled)
 Sire: **P.A.R. THROTTLE 66T (P) (Speckled)**
 ROB 'N SON'S FARMS 6P (Speckled)
CALICO CREEK BUTANE 8B
 P.A.R. KING PIN 1K (Speckled)
 Dam: **PETULA OF P.A.R. 61P (Speckled)**
 LUCKY STRIKE OF P.A.R. 6K (Speckled)

The time to invest in Heartbreaker R20 is now! Her dam started off unknown and quickly become a hot commodity. If you are looking for a later maturing type R20 is going to be slightly larger framed than her mother. We are expecting long strong bodied progeny with this joining to Butane.

3x EMBRYOS

WARATAH PHO FINISH LST P145 x COLGANS GENEREAL CCCC 20G



BUYER _____

PRICE \$ _____

SEMEX ALLIANCE YOGI GOES REDNECK (Speckled)
 Sire: **JOHNER STOCK FARM TRADE SECRET (White)**
 MONNERY RIVER 7W (P) (Speckled)
WARATAH PHO-FINISH P145
 WATTLE GROVE MOONSHINE E10 (ET) (White)
 Dam: **WARATAH PHO-FINISH J155 (AI) (ET) (P) (Speckled)**
 WARATAH E23 (ET) (Black)

MOOVIN ZPOTZ CAMARO 6X (Leopard)
 Sire: **COLGAN'S BAXTER 1B (White)**
 MOOVIN ZPOTZ ROXY AMBER 4R (P) (Speckled)
COLGAN'S GENERAL 20G
 CODIAK KOSMO GNK 17R (P) (Speckled)
 Dam: **CODIAK URE IT GNK 48U (P) (Leopard)**
 NORALTA HALETTE 11H (Speckled)

This cow is quickly proving herself to be something special. She is very feminine with strong maternal traits. An exciting combination to a relatively new sire that we believe will breed a very desirable type.

4x EMBRYOS

BATTALION HEARTBREAKER BAT Q9 x COLGANS GENEREAL CCCC 20G



BUYER _____

PRICE \$ _____

HS UNTAPPED 3A (Speckled)
 Sire: **JOHNER STOCK FARM UNMARKED 2D (P) (Black)**
 JENCREST YAVONNA 6Y (P) (Speckled)
BATTALION HEARTBREAKER Q9
 SPOTS 'N SPROUTS STANDS ALONE (P) (White)
 Dam: **BATTALION HEARTBREAKER M1 (AI) (ET) (P) (White)**
 SIX STAR 13U HEARTBREAKER F13 (AI) (ET) (Speckled)

MOOVIN ZPOTZ CAMARO 6X (Leopard)
 Sire: **COLGAN'S BAXTER 1B (White)**
 MOOVIN ZPOTZ ROXY AMBER 4R (P) (Speckled)
COLGAN'S GENERAL 20G
 CODIAK KOSMO GNK 17R (P) (Speckled)
 Dam: **CODIAK URE IT GNK 48U (P) (Leopard)**
 NORALTA HALETTE 11H (Speckled)

Heartbreaker Q9 is always a popular choice for any who have come and inspected our herd. This joining to General 20G was an easy decision. We love cattle with extra depth and like joining strength to strength. We love the tremendous depth on both sides of this pedigree.

3x EMBRYOS

WARATAH PHO FINISH LST P145 x COLGANS DEXTER D'ANGELO CCCC01D



BUYER _____

PRICE \$ _____

SEMEX ALLIANCE YOGI GOES REDNECK (Speckled)
 Sire: **JOHNER STOCK FARM TRADE SECRET (White)**
 MONNERY RIVER 7W (P) (Speckled)
WARATAH PHO-FINISH P145
 WATTLE GROVE MOONSHINE E10 (ET) (White)
 Dam: **WARATAH PHO-FINISH J155 (AI) (ET) (P) (Speckled)**
 WARATAH E23 (ET) (Black)

LEGACY UNRIVALED 12U (P) (Speckled)
 Sire: **CODIAK TYCOON CAT GNK 12Z (P) (Speckled)**
 SPOTS AND SPROUTS 7W
COLGAN'S DEXTER D'ANGELO 01D
 RIVER HILL 64S URBAN COWBOY 3U (P) (Speckled)
 Dam: **SPOTS 'N SPROUTS 10Y (P) (White)**
 SPOTS 'N SPROUTS 12U (P) (Speckled)

The Pho Finish P145 daughters in this sale have been the most popular on inspection. She breeds a good consistent type and should really click with D'Angelo with their shared similar positive traits.

3x EMBRYOS

BATTALION GRACELANDS BAT P3 x GREENWOOD FUTURE LAF 20F



BUYER _____

PRICE \$ _____

STYALS LIGHTNING LADD 14P (P) (Speckled)
 Sire: **SPOTS 'N SPROUTS STANDS ALONE (P) (White)**
 SPOTS 'N SPROUTS 2R (P) (Speckled)
BATTALION GRACELANDS P3
 RIVER HILL 26T WALKER 60W (P) (Speckled)
 Dam: **THREE WAY GRACELANDS (AI) (ET) (P) (Speckled)**
 CODIAK UNIQUE GNK 8R (P) (Speckled)

RIVER HILL 26T YAGER 99Y (Leopard)
 Sire: **RIVER HILL BACKGROUNDER 025B (Speckled)**
 RIVER HILL 64S WHISPER 25W (P) (Leopard)
UNLIMITEDSPOTS GRNWD FUTURE20F
 P.A.R. XCALABAR 6X (P) (Speckled)
 Dam: **BLACKIE RAINA OF P.A.R. 21Z (Black)**
 RAINA OF P.A.R. 21R (P) (Speckled)

Gracelands P3 is our low-birth-weight breeding female. Her calves are usually small at birth and mature into a showier style female. When in full milk she has a beautiful square udder and small teats. Joined to Future these calves should be very structurally correct with great phenotypes.

3x EMBRYOS

BATTALION GRACELANDS BAT S28 x CALICO CREEK BUTANE LS 8B



BUYER _____

PRICE \$ _____

RIVER HILL 50U ALL IN 60A (White)
 Sire: **UNDERHILL ALL OUT 1D (P) (Speckled)**
 SPOTS 'N SPROUTS 10S (P) (Speckled)
BATTALION GRACELANDS S28
 SPOTS 'N SPROUTS STANDS ALONE (P) (White)
 Dam: **BATTALION GRACELANDS P3 (AI) (ET) (P) (White)**
 THREE WAY GRACELANDS (AI) (ET) (P) (Speckled)

P.A.R. PAPA RAZZI 6P (Speckled)
 Sire: **P.A.R. THROTTLE 66T (P) (Speckled)**
 ROB 'N SON'S FARMS 6P (Speckled)
CALICO CREEK BUTANE 8B
 P.A.R. KING PIN 1K (Speckled)
 Dam: **PETULA OF P.A.R. 61P (Speckled)**
 LUCKY STRIKE OF P.A.R. 6K (Speckled)

We have studied Butanes progeny from a distance for quite a while before purchasing his semen. From what we've seen, this bull has a lot to offer, and we are using him extensively in our ET programs and should really compliment Gracelands S28.

3x EMBRYOS

BATTALION HEARTBREAKER BAT S45 x P.A.R MX EL GUAPO RMS 103E



BUYER _____

PRICE \$ _____

HS UNTAPPED 3A (Speckled)
 Sire: **JOHNER STOCK FARM UNMARKED 2D (P) (Black)**
 JENCREST YAVONNA 6Y (P) (Speckled)
BATTALION HEARTBREAKER S45
 SPOTS 'N SPROUTS STANDS ALONE (P) (White)
 Dam: **BATTALION HEARTBREAKER M1 (AI) (ET) (P) (White)**
 SIX STAR 13U HEARTBREAKER F13 (AI) (ET) (Speckled)

PAR ACE IN A HOLE 66A (Speckled)
 Sire: **P.A.R. CASANOVA 55C (P) (Speckled)**
 POPPY OF P.A.R. 55P (Leopard)
MX EL GUAPO 103E
 P.A.R. THROTTLE 66T (P) (Speckled)
 Dam: **P.A.R. HIGH MAINTENANCE OF MX 103Z (P) (Speckled)**
 SPECIAL DESIGN OF P.A.R. 20S (P) (Speckled)

Heartbreaker S45 is a full ET sister to B. Upper Class Q43 and B. Utah Q44, who are the sires of many of the top animals in this sale. We have big expectations for the future of this heifer and should produce some crackers with El Guapo.

BATTALION LONGBOW S78 - SEMEN LOTS



RIVER HILL 26T WALKER 60W (P) (Speckled)
 Sire: **RIVER HILL 60W LINE DRIVE 54Z (AI) (Leopard)**
 NOTTA PHO-FINISH 54P (Speckled)
BATTALION LONGBOW S78
 SPOTS 'N SPROUTS STANDS ALONE (P) (White)
 Dam: **MT ECCLES QUEEN ALONE (AI) (ET) (Speckled)**
 WARATAH E25 (ET) (P) (Black)

LOT 55 PACKAGE: 10 Straws

BUYER _____

PRICE \$ _____

LOT 56 PACKAGE: 5 Straws

BUYER _____

PRICE \$ _____

	GL	BW	200	400	600	MCW	Milk	SS	CWT	EMA	Rib	Rump	RBV%	IMF%	GENETIC PROFILE	
EBV	0.2	2.4	23	37	51	59	8	0.2	32	0.3	-0.9	-1.2	0.4	0.2	MYOSTATIN F	POLL STATUS PCPC
Accuracy	53	66	63	62	62	55	50	59	56	48	55	54	53	51	COAT RGF	LEPTIN C/T

Battalion Longbow BAT S78 was selected to become our resident sire at a very young age and only continues to impress with age. Selected firstly on structure and balance then his increased scrotal development and growth. The security in this sire comes from his proven powerhouse pedigree on both sides. Keep an eye on this bull he is going to make an impact!



SALE SUMMARY.

BULLS.

OFFERED	SOLD
Top Price \$ _____	
Average \$ _____	

FEMALES.

OFFERED	SOLD
Top Price \$ _____	
Average \$ _____	

SEMEN.

OFFERED	SOLD
Top Price \$ _____	
Average \$ _____	

EMBRYOS.

OFFERED	SOLD
Top Price \$ _____	
Average \$ _____	

SALE TOTAL GROSS \$ _____

THANK YOU.

Thank you to all successful purchasers, under bidders and all who attended the sale for your support. Any inspection and consideration of our cattle is much appreciated.

Grant, Kylie, Travis, Grace & Hailey

PURCHASER DETAILS

Name: _____

Trading Name: _____

Address: _____

Phone: _____ Mobile: _____

Email: _____

PIC Number: _____ Bid Card Number: _____

AGENT DETAILS

Company Name: _____

Agent Name: _____

Phone: _____ Mobile: _____

PURCHASE DETAILS

Lots Purchased: _____

Transport Required: Yes No

Insurance Required: Yes No

Society Transfer Required: Yes No

Herd Ident (if applicable): _____

Signature: _____

Date: _____



GET **NEW**

TWICE AS TOUGH

ON WORMS

DECTOMAX + LEVAMISOLE

DECTOMAX V

doramectin and levamisole injection

259 BYRON ST, INVERELL NSW 2360 - 02 67210610

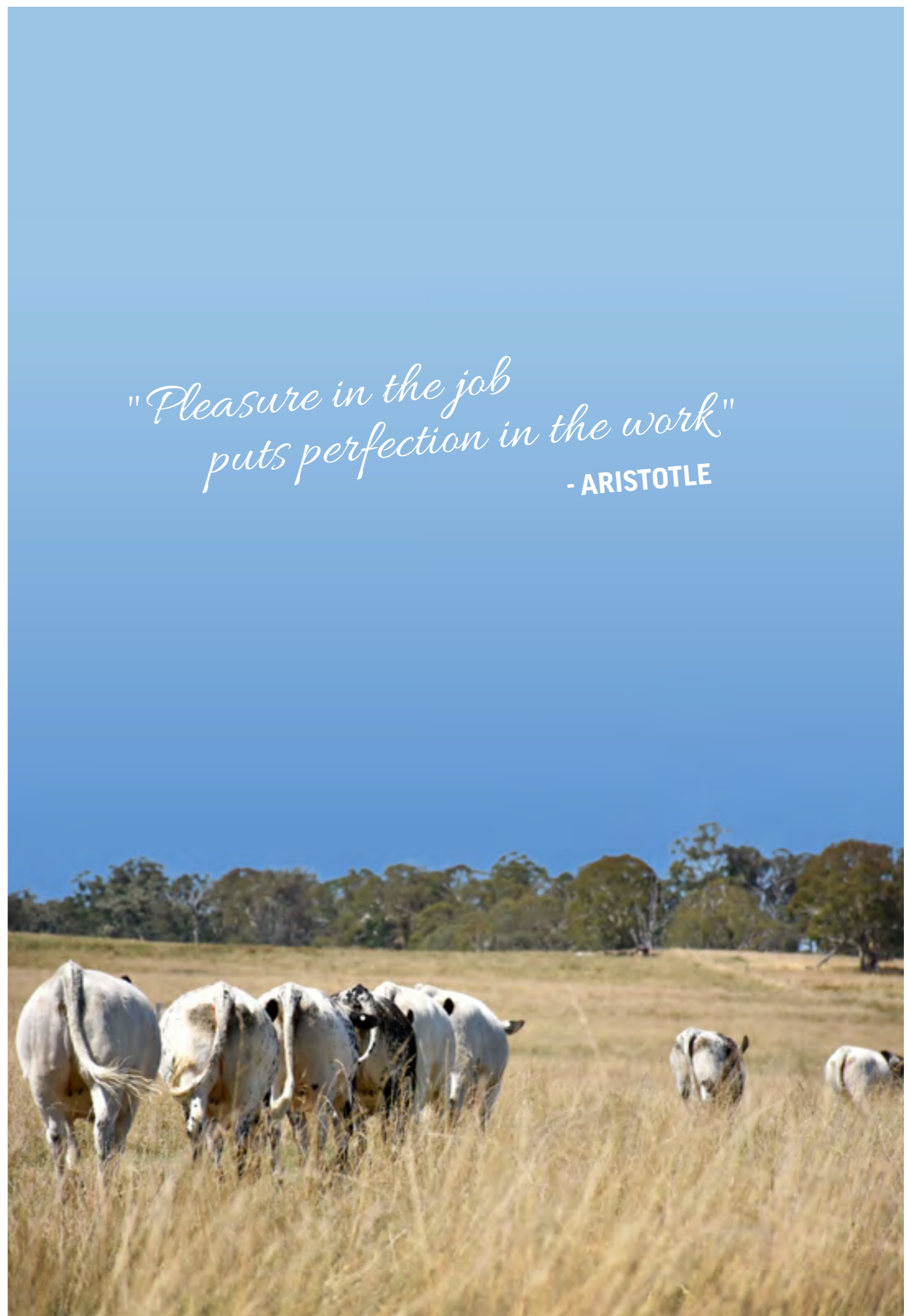








OVER 40 YEARS OF SALES & SERVICE TO NORTHERN NSW & AUSTRALIA

*"Pleasure in the job
puts perfection in the work"*
- ARISTOTLE



WWW.BATTALION.COM.AU